

# Lums Pond State Park

## 2024–25 Hunting Rules

*Refer to map for approximate locations of indicated areas.*

1. In addition to the rules and regulations found in the “Delaware Hunting and Trapping Guide: 2024-2025”, specific rules that apply to Lums Pond State Park are listed below.  
**Registration of all hunters participating in the Delaware State Park Hunting Program is required. The permit may be purchased via Digital DNREC or where Delaware hunting licenses are sold beginning in August 2024. Outside vendors charge an additional processing fee. You must have this permit prior to hunting. NOTE:** Once obtained, this registration will be valid for hunters participating in the Delaware State Park Hunting Program at any of the nine Delaware State Parks where hunting is permitted.

**It is the hunter’s responsibility to become familiar with each park’s specific rules and regulations prior to hunting.**

2. There is no small game, dove or waterfowl hunting at Lums Pond State Park.
3. There is *no* early (October) muzzleloader or general firearm seasons, January handgun season, or January muzzleloader season at Lums Pond State Park.
4. Mentored hunting is permitted, with no more than one hunter and one mentor for any single stand or zone tag. Only one bow, crossbow or firearm is permitted with each stand or zone tag.
5. General State Park Hunting Rules
  - a. There is **No Sunday Hunting** in Delaware State Parks
  - b. Failure to comply with any state laws, rules, regulations, and/or policies may result in arrest and/or suspension of all hunting privileges in Delaware State Parks.
  - c. Handguns are not permitted for deer hunting in Delaware State Parks.
  - d. Straight-walled pistol caliber rifles are not permitted for deer hunting in Delaware State Parks north of the Chesapeake and Delaware Canal
  - e. It is illegal to use or build a nailed or permanent tree stand or ladder. Portable stands must be of a type that will not damage trees. **Unattended stands will be confiscated.**
  - f. Use of trail cameras in Delaware State Parks is prohibited.
  - g. Driving deer into and/or through hunting areas is prohibited.
  - h. The clearing/cutting of vegetation to form shooting lanes or for any other purpose is prohibited.
  - i. Use of Bait is prohibited in Delaware State Parks.
  - j. Use of buckshot is prohibited in Delaware State Parks.
  - k. Driving motorized vehicles off-road into fields, woods, or along trails is prohibited. No motorized hand carts or ATVs are allowed to recover harvested deer. E-bikes may be used on state park trails that allow bicycles. Bicycles,

- including E-bikes may not be ridden on paths from state park trails to the deer stand, pin or archery zone. Manual deer carts are authorized for use.
- l. Park only in designated parking areas (refer to map for approximate locations).
  - m. **Hunters shall not enter the tag board parking lot before 4:00 am. Tags may not be pulled prior to 4:30 am.**
  - n. State Parks are carry-in, carry-out areas. Please take any trash you accumulate with you.
6. Deer Hunting – Archery/Crossbow Season
- Permitted, in season, in Zones A, B, C, W, X, Y, and Z, from September 2, 2024 to February 1, 2025.
  - Within Zone Z, five stands (Z1 – Z5) are available on a first-come, first-serve basis for hunter safety and convenience. **Use of these stands is mandatory.** Hunting outside of the stands in Zone Z is not permitted. Refer to the Lums Pond State Park Hunting Map for the approximate locations of the trails to the archery stands. Only archery/crossbow hunting is permitted in Zones W, X, Y, and Z.
  - Within Zone D, four stands (D1 – D4) are available on a first-come, first-serve basis for hunter safety and convenience. Archery hunters may hunt from the ground within the painted perimeter around the stand.
  - Within Zone B eight stands (B1 – B8) are available on a first-come, first-serve basis for hunter safety and convenience. Archery hunters may hunt from the ground within the painted perimeter around the stand.
  - During archery/crossbow seasons, hunting is prohibited within 50 yards of any park trail due to increased visitor usage throughout the park. As a rule of thumb, hunters should not be visible from trails.
  - Hunter orange must be worn by archery hunters at all times when dates overlap with any Statewide Gun Seasons.
7. Deer Hunting—General Firearm Season
- Permitted, in season, in Zones A, B, C, and D. Seasons are as follows:
  - November 15 - November 23, 2024
  - December 14 - December 21, 2024 (Antlerless)
  - January 18 – January 25, 2025
  - Within Zone B eight stands (B1 – B8) are available on a first-come, first-serve basis for hunter safety and convenience. **Use of these stands is mandatory.** Hunting outside of the stands in Zone B is not permitted.
  - Within Zone D, four stands (D1 – D4) are available on a first-come, first-serve basis for hunter safety and convenience. **Use of these stands is mandatory.** Hunting outside of the stands in Zone D is not permitted. Only archery/crossbow hunting is permitted in Zones W, X, Y, and Z.
  - All hunters must hunt from an elevated portable stand, provided by the hunter, not less than 10 feet above the ground during all gun seasons. Ground hunting during gun seasons is no longer permitted.
  - Shotguns and muzzleloaders are the only permitted firearms during general firearm seasons.
  - Red fox and coyote may be harvested as incidental take with a shotgun or muzzleloader during general firearm seasons. Use of calls is prohibited.
8. Hunters (both archery/crossbow and shotgun) must register at the tag board in the R. C. Field. All hunters are required to sign out a tag for the area or stand he/she will be hunting in, before entering the hunting area. The tag must be displayed on the dashboard of the hunter's vehicle. Tags must be returned and the hunter must sign out when the hunter leaves their hunting

area for any reason. Tags may not be removed from the board until 4:30 AM daily. Failure to comply with these rules will result in revocation of park hunting privileges.

9. One ground blind designated as PDB is designated for hunters who possess a valid disabled hunter certification card issued by the Delaware Division of Fish and Wildlife. You must be registered as Permanently Disabled to use the blind. To register you must contact the Lums Pond Park Office (302) 368-6989.
10. Hunting or shooting from Lums Pond or over the pond is strictly prohibited.
11. During general firearm seasons hunting is prohibited within 15 yards of any park trail. While trails are closed during all shotgun deer seasons, other park users sometimes enter upon the trails. **Be aware of your target and what is beyond it.**
12. All deer harvested at Lums Pond State Park must be reported on the sign-in/sign-out sheet at the tag board at the R.C. Field and registered, via the on-line or toll-free reporting system, as required by the Division of Fish and Wildlife. Deer should be reported as follows:

Land Type:	Public
County:	New Castle
Zone:	1B
Location Type:	State or County Park
Location Description:	Lums Pond State Park

13. The possession and/or consumption of alcoholic beverages or drugs are strictly prohibited.
14. The main park entrance gate on Howell School Road opens to the public at 8:00 a.m. and closes at sunset. Dependent upon ongoing construction, weather, or other factors, one or more areas may be closed. For updated information, contact the park office at (302) 368-6989 or visit the Delaware state parks website at [www.destateparks.com](http://www.destateparks.com).

**MESSAGE TO ALL HUNTERS:**

- Please be careful, discrete and considerate around other park visitors. Understand that many park patrons are NOT hunters and some may feel threatened by your presence.
- Deer remain in moderate numbers in the park. By hunting in Lums Pond, you are a vital part of our “deer management team”.
- Proper management of Lums’ deer herd is simple: we must harvest does and let more yearling and button bucks walk away to balance the herd’s sex ratio to increase the number of mature males. Make a proper management decision before you shoot.
- Your harvest information is very important to us. Please submit your data accurately.
- No Trespassing on neighboring private property.
- Have a safe and successful hunt.

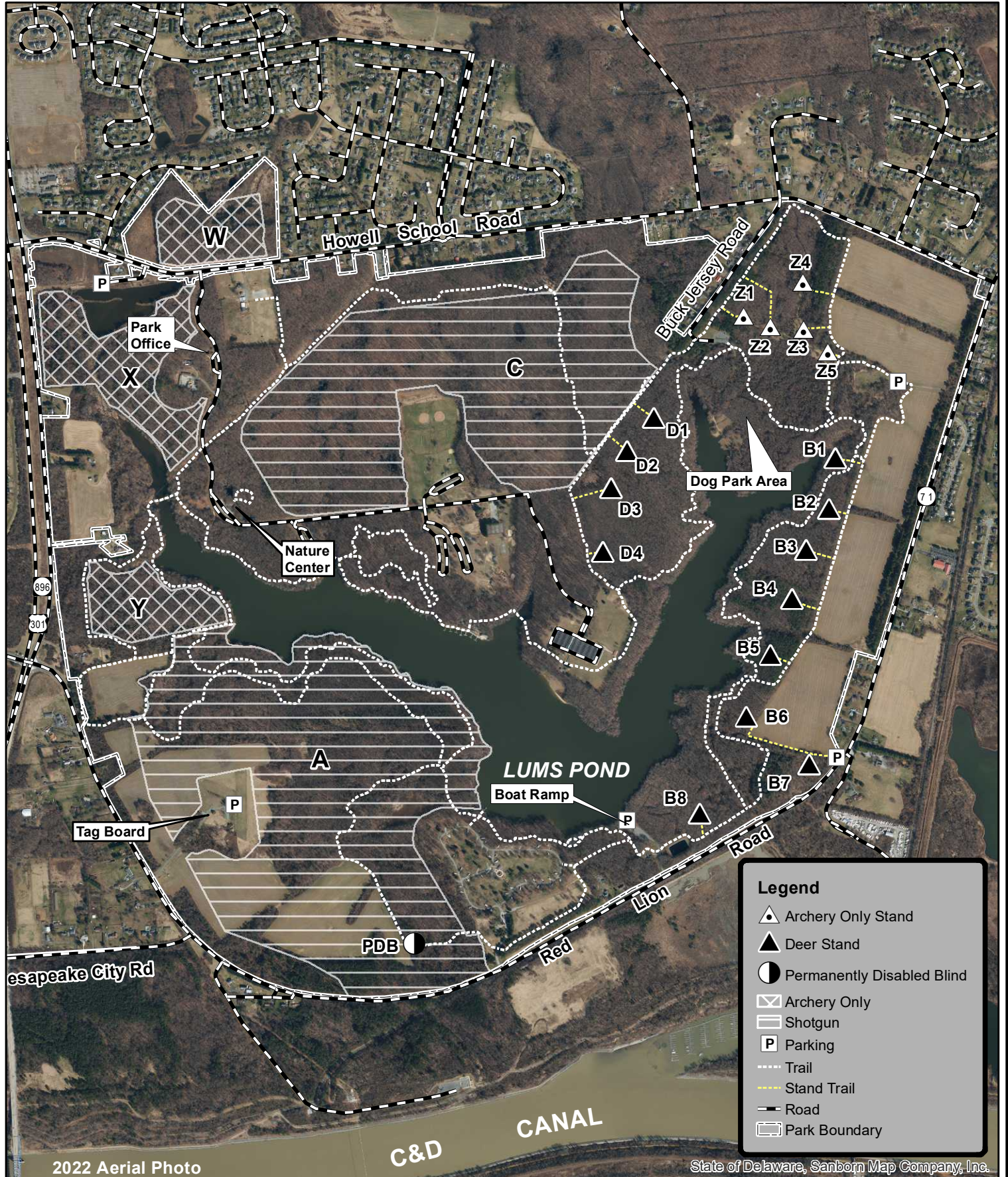
*LPSP2024-25 Updated 6/12/2024*



# Lums Pond State Park Hunting Map 2024-25



[link to park rules](#)



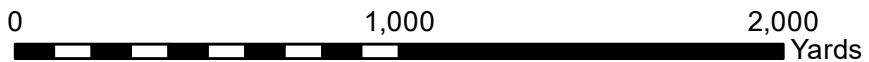
**Legend**

- Archery Only Stand
- Deer Stand
- Permanently Disabled Blind
- Archery Only
- Shotgun
- Parking
- Trail
- Stand Trail
- Road
- Park Boundary

2022 Aerial Photo

State of Delaware, Sanborn Map Company, Inc.

Updated March 26, 2024  
Environmental Stewardship Program  
Division of Parks and Recreation



# Lums Pond State Park – Sunset Lake

## 2024-25 Hunting Rules

### Archery Only

*Refer to attached map for approximate locations of indicated areas.*

1. In addition to the rules and regulations found in the “Delaware Hunting and Trapping Guide: 2024-2025”, specific rules that apply to Lums Pond State Park are listed below.

**Registration of all hunters participating in the Delaware State Park Hunting Program is required. The permit may be purchased via Digital DNREC or where Delaware hunting licenses are sold beginning in August 2024. Outside vendors charge an additional processing fee. You must have this permit prior to hunting. NOTE:** Once obtained, this registration will be valid for hunters participating in the Delaware State Park Hunting Program at any of the nine Delaware State Parks where hunting is permitted.

**It is the hunter’s responsibility to become familiar with each park’s specific rules and regulations prior to hunting.**

2. Hunting is prohibited until September 2, 2024.
3. There is no small game, dove or waterfowl hunting at Sunset Lake.
4. Mentored hunting is permitted, with no more than one hunter and one mentor for any single tag. Only one bow or crossbow is permitted at each tag site.
5. General State Park Hunting Rules
  - a. There is **No Sunday Hunting** in Delaware State Parks
  - b. Failure to comply with any state laws, rules, regulations, and/or policies may result in arrest and/or suspension of all hunting privileges in Delaware State Parks.
  - c. Use of any firearms other than compound and recurve bows and crossbows is prohibited.
  - d. It is illegal to use or build a nailed or permanent tree stand or ladder.
  - e. Use of trail cameras in Delaware State Parks is prohibited.
  - f. Driving deer into and/or through hunting areas is prohibited.
  - g. The clearing/cutting of vegetation to form shooting lanes or for any other purpose is prohibited.
  - h. Use of BAIT is prohibited in Delaware State Parks.
  - i. Driving motorized vehicles off-road into fields, woods, or along trails is prohibited. No motorized hand carts or ATVs are allowed to recover harvested deer. Manual hand carts are permitted.
  - j. Park only in designated parking areas (refer to map for approximate locations).
  - k. State Parks are carry-in, carry-out areas. Please take any trash you accumulate with you.
6. Deer Hunting – Archery/Crossbow Seasons
  - a. Archery/crossbow hunting **ONLY** is permitted for deer, in season, Wednesday, September 2, 2024 through Monday, February 1, 2025.
  - b. There is **NO SUNDAY HUNTING** in Delaware State Parks.

- c. If you plan to hunt at Sunset Lake, regardless of where you purchase your State Park Hunting Permit, you must appear in person at the Lums Pond State Park office during business hours prior to hunting to sign the archery hunting registration form. The park office is open daily April 1 – October 31, 8 am to 4 pm, and Weekdays November 1 to March 31, 8 am to 4 pm.
  - d. Hunter orange must be worn by archery hunters at all times when dates overlap with any Statewide Gun Seasons.
  - e. There are ten archery pin sites. Hunting at the ten pin sites is allowed from a portable non-damaging tree stand (provided by the hunter), not less than 10 feet above ground level, or from the ground within the perimeter marked with paint on trees around a central numbered pin during archery hunting seasons. During the regular state gun-hunting seasons hunters shall only hunt from an elevated tree stand. Ground hunting is not permitted during gun seasons. Unattended portable stands shall be confiscated.
  - f. Pin sites will be filled on a first-come, first-served basis using the self-registration tag board system. The tag board is located at the parking lot located off of RT 72 just south of Reybold Road .
  - g. To access Pins 1- 4 and 10 hunters must park in the parking lot where the tag board is located.
7. All deer harvested at Sunset Lake must be reported on the sign-in/sign-out sheet at the tag board at Sunset Lake. When registering your deer via the on-line or toll-free reporting system, as required by the Division of Fish and Wildlife, deer should be registered as follows:

Land Type:	Public
County:	New Castle
Zone:	1B
Location Type:	State or County Park
Location Description:	Lums Pond State Park

8. The possession and/or consumption of alcoholic beverages or drugs are strictly prohibited.

**MESSAGE TO ALL HUNTERS:**

- Please be careful, discrete and considerate around other park visitors. Understand that many park patrons are NOT hunters and some may feel threatened by your presence.
- Deer remain in moderate numbers in the park. By hunting in Lums Pond, you are a vital part of our “deer management team”.
- Proper management of Lums’ deer herd is simple: we must harvest does and let more yearling and button bucks walk away to balance the herd’s sex ratio to increase the number of mature males. Make a proper management decision before you shoot.
- Have a safe and successful hunt.

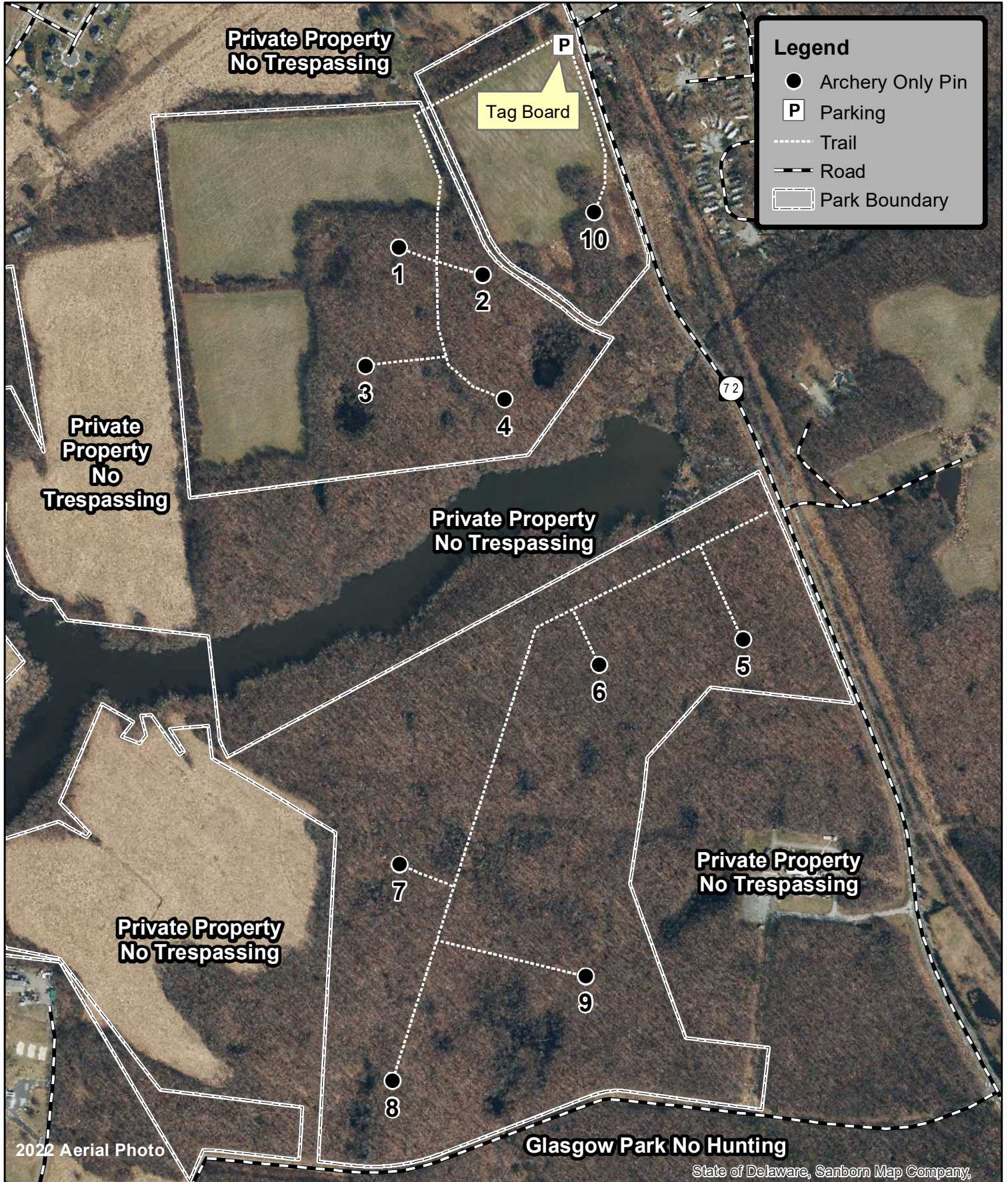
*LPSP(Sunset Lake)2024-25 5/22/2024*



# Lums Pond State Park Sunset Lake Preserve Hunting Map 2024-25



[link to park rules](#)



**Legend**

- Archery Only Pin
- P Parking
- ..... Trail
- - - - Road
- ▭ Park Boundary

2022 Aerial Photo

Glasgow Park No Hunting

State of Delaware, Sanborn Map Company,

Updated May 9, 2024  
Environmental Stewardship Program  
Division of Parks and Recreation

