

Killens Pond State Park

2024–25 Hunting Seasons/Hunting Rules

Refer to map for approximate locations of indicated areas.

1. In addition to the rules and regulations found in the “Delaware Hunting and Trapping Guide: 2024-2025”, specific rules that apply to Killens Pond State Park are listed below. **Registration of all hunters participating in the Delaware State Park Hunting Program is required. The permit may be purchased via Digital DNREC or where Delaware hunting licenses are sold beginning in August 2024. Outside vendors charge an additional processing fee. You must have this permit prior to hunting.** **NOTE:** Once obtained, this registration will be valid for hunters participating in the Delaware State Park Hunting Program at any of the nine Delaware State Parks where hunting is permitted.

It is the hunter’s responsibility to become familiar with each park’s specific rules and regulations prior to hunting.

2. General State Park Hunting Rules
 - a. There is **No Sunday Hunting** in Delaware State Parks
 - b. Failure to comply with any state laws, rules, regulations, and/or policies may result in arrest and/or suspension of all hunting privileges in Delaware State Parks.
 - c. **Handguns are not permitted for deer hunting in Delaware State Parks.**
 - d. It is illegal to use or build a nailed or permanent tree stand or ladder. Portable stands must be of a type that will not damage trees. **Unattended stands will be confiscated.**
 - e. Use of trail cameras in Delaware State Parks is prohibited.
 - f. Driving deer into and/or through hunting areas is prohibited.
 - g. The clearing/cutting of vegetation to form shooting lanes or for any other purpose is prohibited.
 - h. Use of Bait is prohibited in Delaware State Parks.
 - i. Use of buckshot is prohibited in Delaware State Parks.
 - j. Driving motorized vehicles off-road into fields, woods, or along trails is prohibited. No motorized hand carts or ATVs are allowed to recover harvested deer. Manual deer carts are authorized for use.
 - k. Park only in the designated parking areas (refer to map for approximate locations).
 - l. State Parks are carry-in, carry-out areas. Please take any trash you accumulate with you.
 - m. Hunting is only allowed at 17 designated pin sites and one permanently disabled hunting stand (refer to map for approximate locations). Each pin site includes a metal ladder stand within a perimeter marked with paint on trees around the stand. Hunters may, at their own risk, hunt from the existing ladder stand or a portable non-damaging tree stand provided by the hunter, not less than 10 feet above ground level placed within the marked perimeter.
 - n. Pin sites and the permanently disabled stand will be filled on a first-come, first-served basis using the self-registration tag board system. Hunters using the permanently disabled stand must have in their possession a valid disabled hunter card issued by the Delaware Division of Fish and Wildlife. The tag board is located in the parking lot at the Dog Training Area on Paradise Alley Road. No tag may be removed prior to 4:30am. Tags must be returned to board anytime a hunter leaves the stand.
 - o. Only one hunter with a single permitted firearm (including archery equipment) is allowed in a stand or blind at one time.

- p. Hunters are allowed to harvest **antlerless deer and quality bucks only** in Killens Pond State Park. Quality Buck tags may only be used on an antlered deer with an outside antler spread of at least 15 inches. The distance between the tips of a deer’s ears when both ears are held straight out from the head in the “alert” position is approximately 15 inches so a deer in which this tag would be applicable would generally need to have antlers that are at least as wide as the space between his ear tips.

3. Archery/Crossbow Hunting

- a. Permitted in season and in accordance with Delaware state laws, regulations, and rules, September 2, 2024 – February 1, 2025. Archery hunting is allowed from all pin locations.
- b. Hunter orange must be worn by archery hunters at all times when dates overlap with any Statewide Gun Seasons.
- c. No arrows or bolts may be nocked prior to a hunter setting up within a stand perimeter to hunt from the ground or in an elevated stand. Spot and stalk hunting is prohibited.
- d. Hunters may hunt from a portable ground blind within the marked perimeter with a long, recurved or compound bow or crossbow.

4. General Firearm Hunting

- a. Permitted in season and in accordance with Delaware state laws, regulations, and rules, November 15 – November 23, 2024; December 14 – December 21, 2024 Special Antlerless and January 18 – January 25, 2025. Gun hunting permitted **ONLY** at pins 1 – 15, including PD4. Pins 16 – 18 are archery-only pins. Gun hunting is prohibited at pins 16 – 18.
- b. Muzzleloaders may be used during shotgun seasons.
- c. Shotguns, muzzleloaders and straight-walled pistol-caliber rifles are permitted during the general firearm seasons. The use of buckshot is prohibited.
- d. There is no shotgun hunting during the October season.
- e. Guns shall not be loaded until hunter is in the stand. Spot and stalk hunting is prohibited.
- f. Red fox and coyote may be harvested as incidental take with a shotgun or muzzleloader during general firearm seasons. Use of calls is prohibited.

5. All deer harvested at Killens Pond State Park must be reported on the sign-in/sign-out sheet at the tag board and registered, via the on-line or toll-free reporting system, as required by the Division of Fish and Wildlife. Deer should be reported as follows:

Land Type:	Public
County:	Kent
Zone:	8
Location Type:	State or County Park
Location Description:	Killens Pond State Park

MESSAGE TO ALL HUNTERS:

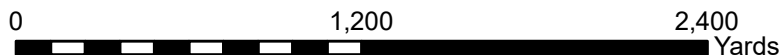
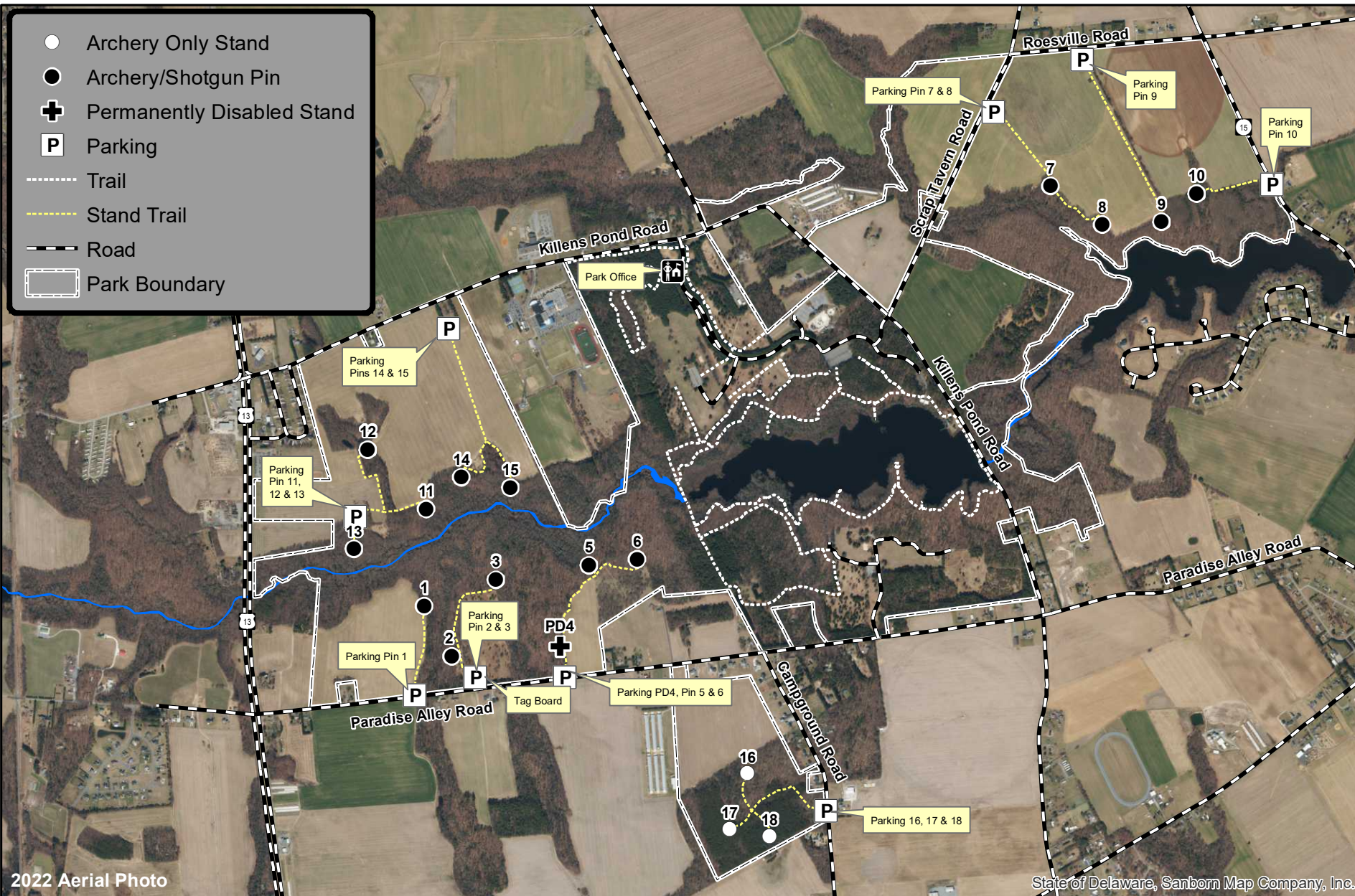
- Please be careful, discrete and considerate around other park visitors. Understand that many park patrons are NOT hunters and some may feel threatened by your presence.
- By hunting in this park, you are a vital part of our “deer management team”. White-tail deer have been shown to ecologically damage their habitat when they exceed 20 deer per square mile. In the majority of our parks, the deer herds reach much greater densities.
- Your harvest information is very important to us. Please submit your data accurately.
- No Trespassing on neighboring private property.
- Have a safe and successful hunt.



Killens Pond State Park Hunting Map 2024-25



[link to park rules](#)



Cape Henlopen State Park (East)

2024 – 2025 Hunting Seasons/Hunting Rules

Refer to map on other side for approximate locations of indicated areas.

1. In addition to the rules and regulations found in the “Delaware Hunting and Trapping Guide: 2024-2025,” specific rules that apply to Cape Henlopen State Park (East) are listed below. **Registration of all hunters participating in the Delaware State Park Hunting Program is required. The permit may be purchased via Digital DNREC or where Delaware hunting licenses are sold beginning in August 2024. Outside vendors charge an additional processing fee. You must have this permit prior to hunting. NOTE:** Once obtained, this registration will be valid for hunters participating in the Delaware State Park Hunting Program at any of the nine Delaware State Parks where hunting is permitted.

It is the hunter’s responsibility to become familiar with each park’s specific rules and regulations prior to hunting.

2. Hunting for deer is permitted in all designated areas in season from September 2, 2024 through February 1, 2025. No firearm hunting for deer is permitted prior to the special **Youth/Non-Ambulatory Disabled Deer Hunt** on November 2, 2024. A tag board is located across from the Ferry Terminal on the south side of the Trail along the old railroad tracks. All hunters using a park stand must pull the tag from the tag board no earlier than 4:30 AM and fill-in information requested on the sign-in/sign-out sheet. All hunters hunting in Area A are now required to complete the information requested on the sign-in/sign-out sheet (except tag number). During gun seasons hunters in Area A must hunt from an elevated portable stand provided by the hunter.
3. General Park Hunting Rules
 - a. There is **No Sunday Hunting** in Delaware State Parks
 - b. Failure to comply with any state laws, rules, regulations, and/or policies may result in arrest and/or suspension of all hunting privileges in Delaware State Parks.
 - c. Handguns are not permitted for deer hunting in Delaware State Parks.
 - d. It is illegal to use or build a nailed or permanent tree stand or ladder. Portable stands must be of a type that will not damage trees. **Unattended stands will be confiscated.**
 - e. **Use of trail cameras** in Delaware State Parks **is prohibited.**
 - f. Driving deer into and/or through hunting areas is prohibited.
 - g. The clearing/cutting of vegetation to form shooting lanes or for any other purpose is prohibited.
 - h. Use of Bait is prohibited in Delaware State Parks.
 - i. Use of buckshot is prohibited in Delaware State Parks.
 - j. Driving motorized vehicles off-road into fields, woods, or along trails is prohibited. No motorized hand carts or ATVs are allowed to recover harvested deer. E-bikes may be used on state park trails that allow bicycles. Bicycles, including E-bikes may not be ridden on paths from state park trails to the deer stand, pin or archery zone. Manual deer carts are authorized for use.
 - k. Park only in designated parking areas (refer to map for approximate locations).
 - l. Hunters shall not enter the tag board parking lot before 4:00 am.
 - m. State Parks are carry-in, carry-out areas. Please take any trash you accumulate with you.
4. Waterfowl Hunting
 - a. Waterfowl Hunting is **permitted** in season **in area A between November 1, 2024 and January 31, 2025.**
 - b. Hunters may NOT construct blinds in this area.
 - c. No waterfowl hunting is permitted in the Gordon’s Pond area.
5. Deer Hunting – Archery and Crossbow hunting
 - a. Permitted in area A in season, from September 2, 2024 through February 1, 2025. Stands 2 – 5, PD1 and PD2 are for the convenience of the hunter and are not mandatory. To hunt from the PD Stands, PD1 and PD2, the hunter must have in their possession a valid disabled hunter card issued by the Delaware Division of Fish and Wildlife.

- b. There is a minimum 50-yard safety zone along all trails, except the Gordon's Pond Trail which has a 100-yard safety zone.
 - c. Four Archery-only Stands A - D located in the Pinelands section of the Park are available to hunters during the regular Archery season. Hunters must hunt from the stands. Ground hunting is prohibited in this area of the park. Hunters wishing to hunt from these stands must park at the designated parking area for Stand A and walk into the park if the main park gate is closed. When the main gate is open hunters using Stand B, C and D may park near the old tennis courts as indicated on the map.
 - d. Archery hunting is permitted during approved firearms seasons as limited by the rules below and other applicable regulations. Note that hunter orange is required during gun seasons.
6. Deer Hunting - Muzzleloader Season
- a. Permitted in area A, but limited to January 27 – February 1, 2025 only. **There is no October Muzzleloader Season in the east section of the park.**
 - b. Muzzleloaders may also be used during General Firearm Seasons (see below).
 - c. Designated stands are for the convenience of the hunter and are not mandatory. However, during gun seasons hunters must hunt from an elevated portable stand, provided by the hunter, at least 10 feet above the ground. Hunting from the ground during guns seasons is no longer permitted.
 - d. **Red fox and coyote may be harvested as incidental take with a muzzleloader while hunting for deer during the January muzzleloader season. Use of calls is prohibited.**
7. Deer Hunting – General Firearm Season
- a. Permitted in the permanent stands PD1, PD2 and 2 – 5 in Area A during the Youth/Non-Ambulatory Disabled Deer Hunt on November 2, 2024, November 15 - November 23, 2024; December 14 - December 21, 2024 Special Antlerless and January 18 - January 25, 2025 seasons. **No gun hunting is permitted until November General Firearms Season in the east section of the park.**
 - b. Shotguns, Muzzleloaders and straight-walled pistol-caliber rifles are permitted for use during General Firearm Seasons in Delaware State Parks south of the C&D Canal.
 - c. Designated stands are for the convenience of the hunter and are not mandatory. However, during gun seasons hunters choosing not to use the wooden stands must hunt from an elevated portable stand, provided by the hunter, at least 10 feet above the ground. **Hunting from the ground during gun seasons is no longer permitted.**
 - d. **Red fox and coyote may be harvested as incidental take with a muzzleloader or shotgun while hunting for deer during general firearm seasons. Use of calls is prohibited.**
8. All deer harvested in the East Unit of Cape Henlopen State Park must be reported via the on-line or toll-free telephone reporting system as required by the Delaware Division of Fish and Wildlife. Deer should be reported as follows:

Land Type:	Public
County:	Sussex
Zone:	9
Location Type:	State or County Park
Location Description:	Cape Henlopen State Park

MESSAGE TO ALL HUNTERS:

- Please be careful, discrete and considerate around other park visitors. Understand that many park patrons are NOT hunters and some may feel threatened by your presence.
- Please show consideration to fellow hunters.
- Have a safe and successful hunt.

CapeEast2024-25 Updated 6/12/2024



Cape Henlopen State Park Hunting Map - East Side 2024-25



[link to park rules](#)



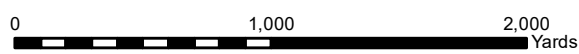
Legend

- Archery Only Stand
- Deer Stand
- Permanently Disabled Stand
- Parking
- Trail
- Hunting Trail
- Road
- Zone A (Deer and Waterfowl Only)
- Park Boundary

2022 Aerial Photo

State of Delaware, Sanborn Map Company, Inc.

Updated March 25, 2024
Environmental Stewardship Program
Division of Parks and Recreation



Cape Henlopen State Park (West)

2024–25 Hunting Seasons/Hunting Rules

Refer to map for approximate locations of indicated areas.

1. In addition to the rules and regulations found in the “Delaware Hunting and Trapping Guide: 2024-2025” specific rules that apply to Cape Henlopen State Park (West) are listed below. **Registration of all hunters participating in the Delaware State Park Hunting Program is required. The permit may be purchased via Digital DNREC or where Delaware hunting licenses are sold beginning in August 2024. Outside vendors charge an additional processing fee. You must have this permit prior to hunting. NOTE:** Once obtained, this registration will be valid for hunters participating in the Delaware State Park Hunting Program at any of the nine Delaware State Parks where hunting is permitted.

It is the hunter’s responsibility to become familiar with each park’s specific rules and regulations prior to hunting.

2. Hunting for deer is permitted in all designated areas in season from September 2, 2024 through February 1, 2025. No firearm hunting for deer is permitted prior to the special **Youth/Non-Ambulatory Disabled Deer Hunt** on November 2, 2024.
3. General Park Hunting Rules
 - a. There is **No Sunday Hunting** in Delaware State Parks
 - b. Failure to comply with any state laws, rules, regulations, and/or policies may result in arrest and/or suspension of all hunting privileges in Delaware State Parks.
 - c. Handguns are not permitted for deer hunting in Delaware State Parks.
 - d. It is illegal to use or build a nailed or permanent tree stand or ladder. Portable stands must be of a type that will not damage trees. **Unattended stands will be confiscated.**
 - e. **Use of trail cameras** in Delaware State Parks **is prohibited.**
 - f. Driving deer into and/or through hunting areas is prohibited.
 - g. The clearing/cutting of vegetation to form shooting lanes or for any other purpose is prohibited.
 - h. Use of Bait is prohibited in Delaware State Parks.
 - i. Use of buckshot is prohibited in Delaware State Parks.
 - j. Driving motorized vehicles off-road into fields, woods, or along trails is prohibited. No motorized hand carts or ATVs are allowed to recover harvested deer. E-bikes may be used on state park trails that allow bicycles. Bicycles, including E-bikes may not be ridden on paths from state park trails to the deer stand, pin or archery zone. Manual deer carts are authorized for use.
 - k. Park only in designated parking areas (refer to map for approximate locations).
 - l. State Parks are carry-in, carry-out areas. Please take any trash you accumulate with you.
 - m. All hunters must honor the 200-yard safety zone (**100 yards on each side**) along the Junction-Breakwater Trail. This area is heavily used throughout the year by the non-hunting public.
4. Spray Irrigation Area: Sussex County will be permitting deer hunting on lands around the Wolf Neck Wastewater Treatment Plant during the 2024-25 hunting season. For more information contact Sussex County at (302) 855-7700.
5. Waterfowl Hunting
 - a. Waterfowl Hunting is permitted in season in area F. Hunters may NOT construct blinds in this area.
 - b. Waterfowl Hunting in the park is restricted to between November 1, 2024 and January 31, 2025.
6. Deer Hunting – Archery and Crossbow hunting

- a. Permitted at Archery Pins E1 – E5 in former Archery-only Area E, and areas F and G in season from September 2, 2024 through February 1, 2025.
 - b. Hunters using Archery pins E1 – E5 must hunt from an elevated portable stand not less than 10 feet above the ground within the radius painted on trees around the central pin. Pins are available on a first come/first served basis. Tags may be pulled from the tag board located in the parking lot on Wolfe Neck Road no earlier than 4:30 AM. Hunters must sign in and out at the tag board when taking and returning tags.
 - c. All areas labeled G are Archery/Crossbow ONLY areas. In area G, Archers must hunt at least 100 yards from the Junction-Breakwater Trail.
 - d. Permitted during firearms seasons. Note that hunter orange is required during gun seasons, **including in the archery and crossbow only areas.**
7. Deer Hunting - Muzzleloader Season
- a. Permitted in area F for the October 11-19 and January 27– February 1, 2025 seasons.
 - b. Hunters must hunt from an elevated portable stand, provided by the hunter, not less than 10 feet above the ground during all gun seasons.
 - c. Red fox and coyote may be harvested as incidental take with a muzzleloader while hunting for deer during muzzleloader seasons. Use of calls is prohibited.
8. Deer Hunting – General Firearm Seasons
- a. Permitted in area F ONLY including the, **Youth/Non-Ambulatory Disabled Deer Hunt** November 2, 2024, November 15 - November 23, 2024, December 14 - December 21, 2024 Special Antlerless and January 18 - January 25, 2025 seasons.
 - b. Shotguns, muzzleloaders and straight-walled pistol-caliber rifles are permitted for use during the general firearm deer seasons in Area F section of Cape Henlopen State Park.
 - c. Hunters must hunt from an elevated portable stand, provided by the hunter, not less than 10 feet above the ground during all gun seasons.
 - d. Red fox and coyote may be harvested as incidental take with a shotgun or muzzleloader while hunting for deer during general firearm seasons. Use of calls is prohibited.
9. All deer harvested in the West Unit of Cape Henlopen State Park must be reported via the on-line or toll-free telephone reporting system as required by the Delaware Division of Fish and Wildlife. Deer should be reported as follows:

Land Type:	Public
County:	Sussex
Zone:	9
Location Type:	State or County Park
Location Description:	Cape Henlopen State Park

MESSAGE TO ALL HUNTERS:

- Please be careful, discrete and considerate around other park visitors. Understand that many park patrons are NOT hunters and some may feel threatened by your presence. Please show consideration to fellow hunters.

CapeWest2024–25 Updated 6/12/2024



Cape Henlopen State Park Hunting Map - West Side 2024-25



[link to park rules](#)

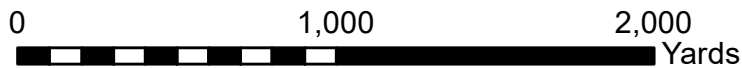


Legend

- Archery Only Pin
- Sussex County Archery Stand
- ▨ Archery Only
- ▨ Shotgun
- Ⓟ Parking
- ⋯ Trail
- - - Hunting Trail
- Road

2022 Aerial Photo

State of Delaware, Sanborn Map Company, Inc.



Cape Henlopen State Park – Angola Neck Nature Preserve 2024 – 2025 Hunting Seasons/Hunting Rules

Refer to map on other side for approximate locations of indicated areas.

1. In addition to the rules and regulations found in the “Delaware Hunting and Trapping Guide: 2024-2025,” specific rules that apply to Cape Henlopen State Park (East) are listed below. **Registration of all hunters participating in the Delaware State Park Hunting Program is required. The permit may be purchased via Digital DNREC or where Delaware hunting licenses are sold beginning in August 2024. Outside vendors charge an additional processing fee. You must have this permit prior to hunting. NOTE:** Once obtained, this registration will be valid for hunters participating in the Delaware State Park Hunting Program at any of the nine Delaware State Parks where hunting is permitted.

It is the hunter’s responsibility to become familiar with each park’s specific rules and regulations prior to hunting.

2. General Hunting Rules
 - a. There is **No Sunday Hunting** in Delaware State Parks
 - b. Failure to comply with any state laws, rules, regulations, and/or policies may result in arrest and/or suspension of all hunting privileges in Delaware State Parks.
 - c. **Use of any firearms** other than compound bows, recurve bows and crossbows **is prohibited.**
 - d. It is illegal to use or build a nailed or permanent tree stand or ladder.
 - e. **Use of trail cameras** in Delaware State Parks **is prohibited.**
 - f. Driving deer into and/or through hunting areas is prohibited.
 - g. The clearing/cutting of vegetation to form shooting lanes or for any other purpose is prohibited.
 - h. Use of BAIT is prohibited in Delaware State Parks.
 - i. Driving motorized vehicles off-road into fields, woods, or along trails is prohibited. No motorized hand carts or ATVs are allowed to recover harvested deer.
 - j. Park only in designated parking areas (refer to map for approximate locations).
 - k. Tags may not be pulled before 4:30 am. Hunters shall not enter the tag board parking lot before 4:00 am.
 - l. State Parks are carry-in, carry-out areas. Please take any trash you accumulate with you.
3. Deer Hunting – Archery/Crossbow
 - a. Permitted in season, from September 2, 2024 through February 1, 2025.
 - b. Permitted during approved firearms seasons. Note that hunter orange is required during gun seasons.
 - c. There are ten (10) designated archery pin sites. Seven (7) are located on the Angola Neck Tract at the south end of Camp Arrowhead Road and three (3) at the Perry Tract, accessible from Waterview Road east of its intersections with Camp Arrowhead and Bookhammer Landing Roads. Hunters using these pin sites must hunt from a portable, non-damaging tree stand from within the marked perimeter around each pin. Perimeters are indicated by individual trees marked with paint. Stands must be a minimum of 10 feet above ground level.
 - d. There is one archery hunting zone located at the Angola Neck Tract on the west side of Camp Arrowhead Road. The archery zone is an island of upland surrounded by wetland. The hunter using the archery zone may hunt from a portable, non-damaging tree stand or a portable ground blind. However, a stand or blind is not required within the archery zone. There is no minimum height requirement for stands within the archery zone.
 - e. Tags for the ten pins and archery zone will be available on a first-come, first-served basis on the tag board at the designated parking area for pins 1 – 4. Tags may be pulled no sooner than 4:30 am on the day of the hunt. Tags must be returned to the board whenever the hunter vacates a pin or the archery zone.

4. All deer harvested at the Angola Neck Nature Preserve must be reported via the on-line or toll-free telephone reporting system as required by the Delaware Division of Fish and Wildlife. Deer should be reported as follows:

Land Type:	Public
County:	Sussex
Zone:	15
Location Type:	State or County Park
Location Description:	Cape Henlopen State Park

MESSAGE TO ALL HUNTERS:

- Angola Neck Nature Preserve is bordered by residential neighborhoods. Please observe all private property while hunting at the Preserve.
- Remember to make a safe and proper management decision before you shoot.
- Have a safe and successful hunt.

CHSP(Angola Neck)2024-25 Updated 3/15/2024



Cape Henlopen State Park Hunting Map 2024-25 - ANNP Angola Neck Tract

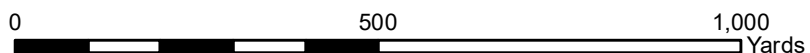


[link to park rules](#)



2022 Aerial Photo

State of Delaware, Sanborn Map Company, Inc.





Cape Henlopen State Park Hunting Map 2024-25 - ANNP Perry Tract

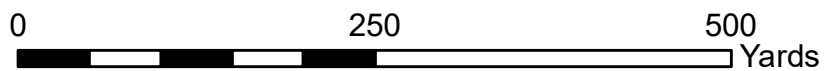


[Link to park rules](#)

- Archery Only Pin
- P** Parking
- Hunting Trail
- ▭ Park Boundary



2022 Aerial Photo



Cape Henlopen State Park – Godwin Tract

2024–25 Hunting Seasons/Hunting Rules

Refer to map on other side for approximate locations of indicated areas.

1. In addition to the rules and regulations found in the “Delaware Hunting and Trapping Guide: 2024-2025,” specific rules that apply to Cape Henlopen State Park (East) are listed below. **Registration of all hunters participating in the Delaware State Park Hunting Program is required. The permit may be purchased via Digital DNREC or where Delaware hunting licenses are sold beginning in August 2024. Outside vendors charge an additional processing fee. You must have this permit prior to hunting. NOTE:** Once obtained, this registration will be valid for hunters participating in the Delaware State Park Hunting Program at any of the nine Delaware State Parks where hunting is permitted.

It is the hunter’s responsibility to become familiar with each park’s specific rules and regulations prior to hunting.

2. General Park Hunting Rules
 - a. There is **No Sunday Hunting** in Delaware State Parks
 - b. Failure to comply with any state laws, rules, regulations, and/or policies may result in arrest and/or suspension of all hunting privileges in Delaware State Parks.
 - c. Handguns are not permitted for deer hunting in Delaware State Parks.
 - d. It is illegal to use or build a nailed or permanent tree stand or ladder. Portable stands must be of a type that will not damage trees. **Unattended stands will be confiscated.**
 - e. **Use of trail cameras** in Delaware State Parks **is prohibited.**
 - f. Driving deer into and/or through hunting areas is prohibited.
 - g. The clearing/cutting of vegetation to form shooting lanes or for any other purpose is prohibited.
 - h. Use of Bait is prohibited in Delaware State Parks.
 - i. Use of buckshot is prohibited in Delaware State Parks.
 - j. Driving motorized vehicles off-road into fields, woods, or along trails is prohibited. No motorized hand carts or ATVs are allowed to recover harvested deer. E-bikes may be used on state park trails that allow bicycles. Bicycles, including E-bikes may not be ridden on paths from state park trails to the deer stand, pin or archery zone. Manual deer carts are authorized for use.
 - k. Park only in designated parking areas (refer to map for approximate locations).
 - l. State Parks are carry-in, carry-out areas. Please take any trash you accumulate with you.
 - m. There is one Permanently Disabled Deer Stand and five designated pin sites. The Permanently Disabled Stand is for hunters possessing a state-issued disabled hunter card. Hunters using the five pin sites must hunt from a portable, non-damaging tree stand from within the marked 25-yard perimeter around each pin. Stands must be a minimum of 10 feet above ground level.
 - n. Tags for the stand and five pins will be available on a first-come, first-served basis on the tag board at the entrance to the designated parking area. Tags may be pulled no sooner than 4:30 am on the day of the hunt.
3. Archery and Crossbow hunting
 - a. Permitted in season, from September 2, 2024 through February 1, 2025.
 - b. Permitted during approved firearms seasons. Note that hunter orange is required during gun seasons.
4. Muzzleloader Season
 - a. Permitted in season October 11 – 19, 2024 and January 27 – February 1, 2025.
 - b. Muzzleloaders may also be used during Shotgun Seasons (see below).

- c. **Red fox and coyote may be harvested as incidental take with a muzzleloader while hunting for deer during muzzleloader seasons. Use of calls is prohibited.**
5. General Firearm Season
- a. Permitted during October 4, 5, 25 and 26, 2024 (Special Antlerless), November 2, 2024 (Youth Hunt), November 15 - 23, 2024; December 14 - December 21, 2024 (Special Antlerless) and January 18 - 25, 2025 seasons.
- b. **Shotguns, Muzzleloaders and Straight-walled Pistol-caliber Rifles** are the only firearms permitted for use at the Godwin Tract during general firearm deer seasons.
- c. **Red fox and coyote may be harvested as incidental take with a shotgun or muzzleloader while hunting for deer during general firearm seasons. Use of calls is prohibited.**
6. All deer harvested in the Godwin Tract of Cape Henlopen State Park must be reported via the on-line or toll-free telephone reporting system as required by the Delaware Division of Fish and Wildlife. Deer should be reported as follows:

Land Type:	Public
County:	Sussex
Zone:	15
Location Type:	State or County Park
Location Description:	Cape Henlopen State Park

MESSAGE TO ALL HUNTERS:

- The Godwin Tract is bordered by residential neighborhoods. Please observe all private property while hunting on the Godwin Tract.
- Remember to make a safe and proper management decision before you shoot.
- Have a safe and successful hunt.
- Failure to abide by the rules herein may result in the loss of hunting privileges in Delaware State Parks.

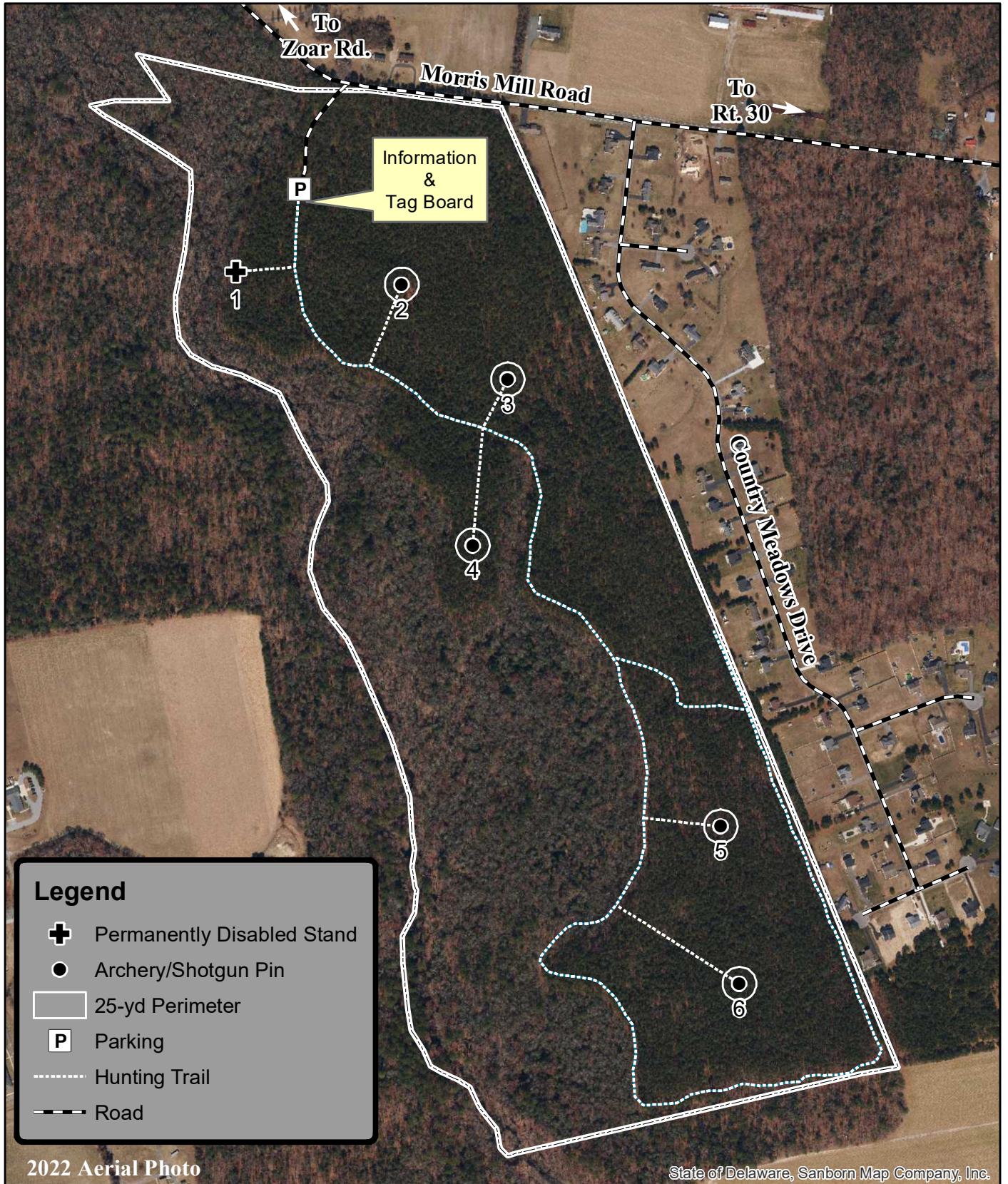
CapeGodwin 2024-25 Updated 6/12/2024



Cape Henlopen State Park Hunting Map - Godwin Tract 2024-25



[link to park rules](#)



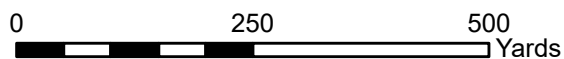
Legend

- Permanently Disabled Stand
- Archery/Shotgun Pin
- 25-yd Perimeter
- Parking
- Hunting Trail
- Road

2022 Aerial Photo

State of Delaware, Sanborn Map Company, Inc.

Updated March 25, 2024
Environmental Stewardship Program
Division of Parks and Recreation



Delaware Seashore State Park

2024–25 Hunting Seasons/Hunting Rules

Refer to map for approximate locations of indicated areas

1. In addition to the rules and regulations found in the “Delaware Hunting and Trapping Guide: 2024-2025”, specific rules that apply to the Delaware Seashore State Park are listed below. **Registration of all hunters participating in the Delaware State Park Hunting Program is required. The permit may be purchased via Digital DNREC or where Delaware hunting licenses are sold beginning in August 2024. Outside vendors charge an additional processing fee. You must have this permit prior to hunting.** **NOTE:** Once obtained, this registration will be valid for hunters participating in the Delaware State Park Hunting Program at any of the nine Delaware State Parks where hunting is permitted.

It is the hunter’s responsibility to become familiar with each park’s specific rules and regulations prior to hunting.

2. General Park Hunting Rules
 - a. There is **No Sunday Hunting** in Delaware State Parks
 - b. Failure to comply with any state laws, rules, regulations, and/or policies may result in arrest and/or suspension of all hunting privileges in Delaware State Parks.
 - c. **Handguns are not permitted for deer hunting in Delaware State Parks.**
 - d. It is illegal to use or build a nailed or permanent tree stand or ladder. Portable stands must be of a type that will not damage trees. **Unattended stands will be confiscated.**
 - e. Use of trail cameras in Delaware State Parks is prohibited.
 - f. Driving deer into and/or through hunting areas is prohibited.
 - g. The clearing/cutting of vegetation to form shooting lanes or for any other purpose is prohibited.
 - h. Use of Bait is prohibited in Delaware State Parks.
 - i. Use of buckshot is prohibited in Delaware State Parks.
 - j. Driving motorized vehicles off-road into fields, woods, or along trails is prohibited. No motorized hand carts or ATVs are allowed to recover harvested deer. E-bikes may be used on state park trails that allow bicycles. Bicycles, including E-bikes may not be ridden on paths from state park trails to the deer stand, pin or archery zone. Manual deer carts are authorized for use.
 - k. Park only in designated parking areas (refer to map for approximate locations).
 - l. State Parks are carry-in, carry-out areas. Please take any trash you accumulate with you.
3. Waterfowl Hunting
 - a. Waterfowl hunting, in season, is permitted from November 1, 2024 through January 31, 2025.
 - b. Hunters must hunt from one of 16 designated and numbered blind sites only. No exceptions. Blind sites are located on Rehoboth and Indian River Bays and are designated by brown and white signs. Boat blinds may be used, but must be within 10 yards of the designated blind site sign. Hunting in open water boat blinds must be a minimum of 1500 feet from designated blind sites in accordance with Delaware Division of Fish and Wildlife regulations.
 - c. Use of blind sites will be on a first-come, first-served basis. Hunters may build GRASS BLINDS for these sites after August 10, 2024. **The Division of Parks and Recreation is not liable for blinds built on park property.** Vegetation may not be cut from State Park property. *Phragmites* and Chinese Silver Grass (*Miscanthus*) can NOT be used for blind construction.
 - d. **NOTE:** Waterfowl seasons as determined by the Delaware Division of Fish & Wildlife and approved by the United States Fish & Wildlife Service. Dates are available in the “Delaware Hunting and Trapping Guide: 2024-2025”.

4. Deer Hunting – Archery/Crossbow Season
 - a. Permitted on Burtons Island Only September 2, 2024 to February 1, 2025.
 - b. Archers must hunt from an elevated portable, non-damaging tree stand when firearm hunting is occurring on Burtons Island. Archers are required to wear hunter orange during all firearm seasons.
5. Deer Hunting – Muzzleloader Season
 - a. Permitted on Burtons Island Only January 27 - February 1, 2025.
 - b. Hunters must hunt from an elevated portable stand, provided by the hunter, at least 10 feet above the ground. Hunting from the ground during guns seasons is no longer permitted.
 - c. Red fox and coyote may be harvested as incidental take with a muzzleloader while hunting for deer during the January muzzleloader season. Use of calls is prohibited.
6. Deer Hunting – General Firearm Season
 - a. Permitted on Burtons Island Only, Youth/Non-ambulatory Disable Deer Hunt November 2, 2024, November 15 – November 23, 2024, December 14 – December 21, 2024 Special Antlerless and January 18 – January 25, 2025 seasons.
 - b. Shotguns, muzzleloaders and straight-walled pistol-caliber rifles are permitted for hunting in state parks south of the Chesapeake and Delaware Canal where gun hunting is permitted.
 - c. Hunters must hunt from an elevated portable stand, provided by the hunter, at least 10 feet above the ground. Hunting from the ground during guns seasons is no longer permitted.
 - d. Red fox and coyote may be harvested as incidental take with a shotgun or muzzleloader while hunting for deer during general firearm seasons. Use of calls is prohibited.
7. Deer harvest data is an important tool for state natural resource managers. Accurate data is essential to help us manage the deer herd in Delaware State Parks and the State Parks hunting program. All deer harvested on Burtons Island in Delaware Seashore State Park must be reported via the on-line or toll-free telephone reporting system as required by the Delaware Division of Fish and Wildlife. Deer should be reported as follows:

Land Type:	Public
County:	Sussex
Zone:	15
Location Type:	State or County Park
Location Description:	Delaware Seashore State Park

MESSAGE TO ALL HUNTERS:

- Please be careful, discrete and considerate around other park visitors. Understand that many park patrons are NOT hunters and some may feel threatened by your presence. Have a safe and successful hunt.

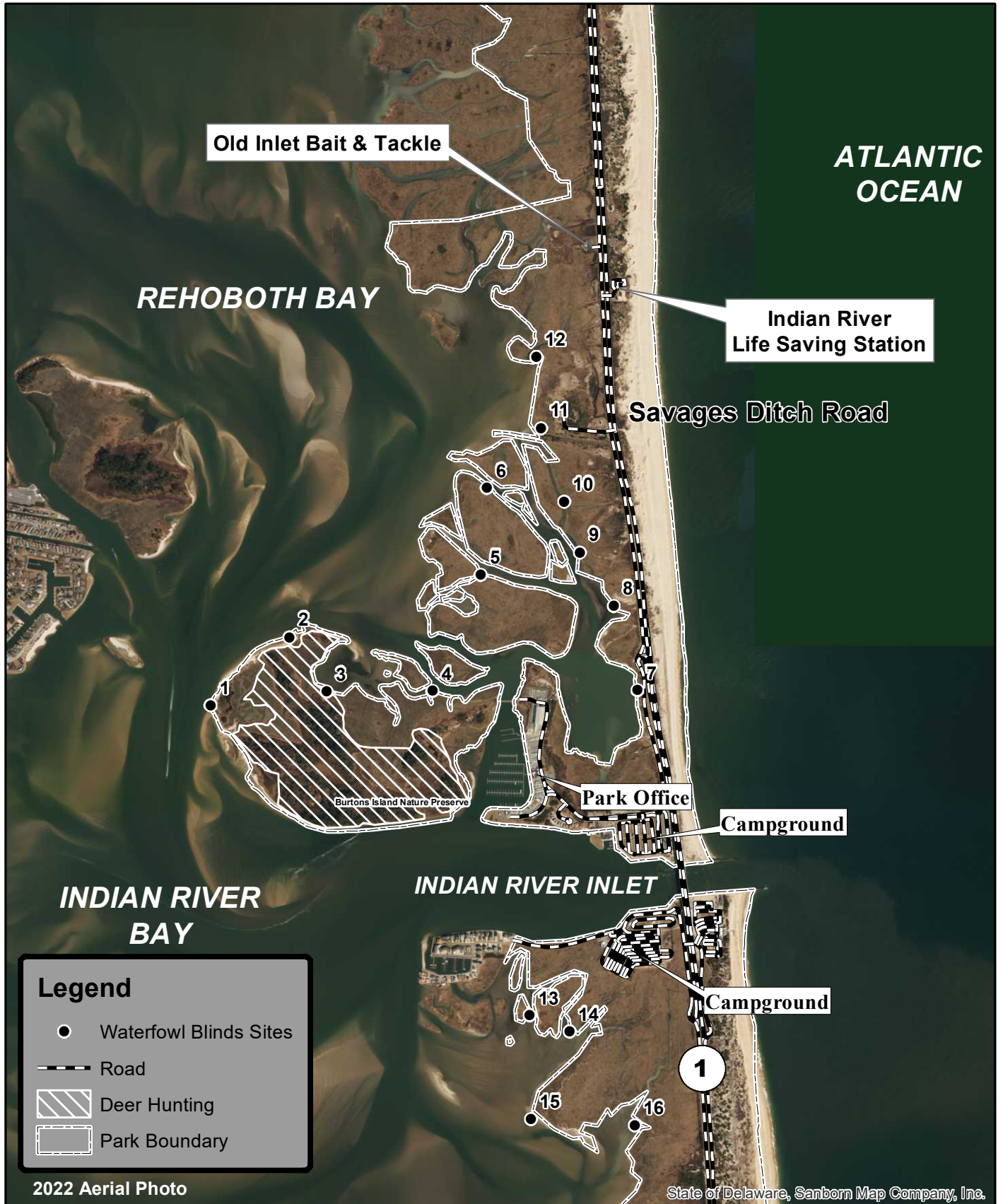
DelawareSeashore2024-25 Updated 6/12/2024



Delaware Seashore State Park Hunting Map 2024-25



[link to park rules](#)



Legend

- Waterfowl Blinds Sites
- - - Road
- ▨ Deer Hunting
- - - - Park Boundary

2022 Aerial Photo

State of Delaware, Sanborn Map Company, Inc.

Updated March 25, 2024
Environmental Stewardship Program
Division of Parks and Recreation



Delaware Seashore State Park - Fresh Pond Tract 2024 – 2025 Hunting Seasons/Hunting Rules

Refer to map for approximate locations of indicated areas.

1. In addition to the rules and regulations found in the “Delaware Hunting and Trapping Guide: 2024-2025”, specific rules that apply to the Fresh Pond Tract are listed below. **Registration of all hunters participating in the Delaware State Park Hunting Program is required. The permit may be purchased via Digital DNREC or where Delaware hunting licenses are sold beginning in August 2024. Outside vendors charge an additional processing fee. You must have this permit prior to hunting. NOTE:** Once obtained, this registration will be valid for hunters participating in the Delaware State Park Hunting Program at any of the nine Delaware State Parks where hunting is permitted.

It is the hunter’s responsibility to become familiar with each park’s specific rules and regulations prior to hunting.

2. General Park Hunting Rules
 - a. There is **No Sunday Hunting** in Delaware State Parks
 - b. Failure to comply with any state laws, rules, regulations, and/or policies may result in arrest and/or suspension of all hunting privileges in Delaware State Parks.
 - c. **Handguns are not permitted for deer hunting in Delaware State Parks.**
 - d. It is illegal to use or build a nailed or permanent tree stand or ladder. Portable stands must be of a type that will not damage trees. **Unattended stands will be confiscated.**
 - e. Use of trail cameras in Delaware State Parks is prohibited.
 - f. Driving deer into and/or through hunting areas is prohibited.
 - g. The clearing/cutting of vegetation to form shooting lanes or for any other purpose is prohibited.
 - h. Use of Bait is prohibited in Delaware State Parks.
 - i. Use of buckshot is prohibited in Delaware State Parks.
 - j. Driving motorized vehicles off-road into fields, woods, or along trails is prohibited. No motorized hand carts or ATVs are allowed to recover harvested deer. E-bikes may be used on state park trails that allow bicycles. Bicycles, including E-bikes may not be ridden on paths from state park trails to the deer stand, pin or archery zone. Manual deer carts are authorized for use.
 - k. Park only in designated parking areas (refer to map for approximate locations).
 - l. State Parks are carry-in, carry-out areas. Please take any trash you accumulate with you.
3. Deer Hunting – Archery/Crossbow Season
 - a. September 2, 2024 –February 1, 2025.
 - b. **Note the areas marked Zone A & C on the map are Archery/Crossbow Only areas.** Self-registration is by Zone and is on a first-come, first-served basis.
 - c. In Hunting Zone B, self-registration for stands #1 -10 is on a first-come, first-served basis. Stand #1 is for use **ONLY** by hunters possessing a Permanently Disabled Hunter card issued by the Delaware Division of Fish and Wildlife.
 - d. Hunters must sign in and sign out on the registration board at the parking lot off Hickman Road.
 - e. These stands are for your convenience and are not mandatory. Archery hunters may hunt from a portable stand or from the ground throughout the zone so long as it is not within 50 yards of a trail or road.
 - f. **There is no archery/crossbow hunting in Zone B during gun seasons.**
 - g. **Note the 50 yard Safety Zones along the trails throughout the park as well as near occupied dwellings.**
4. Deer Hunting – Muzzleloader and General Firearm Seasons

- a. **Due to increased park use by the public, the first gun season will begin with the November Shotgun Season. As a result, the October Antlerless Shotgun dates and the October Muzzleloader Seasons are closed.**
 - b. Open during permitted seasons from designated stands #1-10 only, November 15 – November 23, 2024, December 14 – December 21, 2024 (Special Antlerless), January 18 – January 25, 2025 and January 27 –February 1, 2025 (Muzzleloader).
 - c. Self-registration is on a first-come, first-served basis. Hunters must sign in and sign out on the registration board re-located to the Hickman Road entrance. Sign-in sheets and tags will be distributed at 5:00 am during shotgun season. Stand #1 is for use ONLY by hunters possessing a Permanently Disabled Hunter card issued by the Delaware Division of Fish and Wildlife.
 - d. Hunting is prohibited within 50 yards of any park trail. The clearing/cutting of vegetation to form shooting lanes or for any other purpose is prohibited.
 - e. Shotguns, muzzleloaders and straight-walled pistol-caliber rifles are permitted for use during the general firearm deer seasons.
 - f. Red fox and coyote may be harvested as incidental take with a muzzleloader while hunting for deer during the January muzzleloader season, and with a shotgun or muzzleloader during general firearm seasons. Use of calls is prohibited.
5. All deer harvested in the Fresh Pond Unit of Delaware Seashore State Park must be reported via the on-line or toll-free telephone reporting system as required by the Delaware Division of Fish and Wildlife. Deer should be reported as follows:

Land Type:	Public
County:	Sussex
Zone:	17
Location Type:	State or County Park
Location Description:	Delaware Seashore State Park

MESSAGE TO ALL HUNTERS:

- Please be careful, discrete and considerate around other park visitors. Understand that many park patrons are NOT hunters and some may feel threatened by your presence.
- Please show consideration to fellow hunters.
- Have a safe and successful hunt.

DSSPFreshPond2024-25 Updated 6/5 12/2024



Delaware Seashore State Park Fresh Pond Hunting Map 2024-25



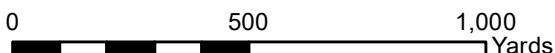
link to park rules



2022 Aerial Photo

State of Delaware, Sanborn Map Company, Inc.

Updated March 11, 2024
Environmental Stewardship Program
Division of Parks and Recreation



Delaware Seashore State Park – Thompson Island 2024–25 Hunting Seasons/Hunting Rules

Refer to map for approximate locations of indicated areas.

1. In addition to the rules and regulations found in the “Delaware Hunting and Trapping Guide: 2024-2025”, specific rules that apply to the Thompson Island Nature Preserve are listed below. **Registration of all hunters participating in the Delaware State Park Hunting Program is required. The permit may be purchased via Digital DNREC or where Delaware hunting licenses are sold beginning in August 2024. Outside vendors charge an additional processing fee. You must have this permit prior to hunting. NOTE:** Once obtained, this registration will be valid for hunters participating in the Delaware State Park Hunting Program at any of the nine Delaware State Parks where hunting is permitted.

It is the hunter’s responsibility to become familiar with each park’s specific rules and regulations prior to hunting.

2. General State Park Hunting Rules
 - a. There is **No Sunday Hunting** in Delaware State Parks
 - b. Failure to comply with any state laws, rules, regulations, and/or policies may result in arrest and/or suspension of all hunting privileges in Delaware State Parks.
 - c. **Handguns are not permitted for deer hunting in Delaware State Parks.**
 - d. It is illegal to use or build a nailed or permanent tree stand or ladder. Portable stands must be of a type that will not damage trees. **Unattended stands will be confiscated.**
 - e. Use of trail cameras in Delaware State Parks is prohibited.
 - f. Driving deer into and/or through hunting areas is prohibited.
 - g. The clearing/cutting of vegetation to form shooting lanes or for any other purpose is prohibited.
 - h. Use of Bait is prohibited in Delaware State Parks.
 - i. Use of buckshot is prohibited in Delaware State Parks.
 - j. Driving motorized vehicles off-road into fields, woods, or along trails is prohibited. No motorized hand carts or ATVs are allowed to recover harvested deer. Manual deer carts are authorized for use.
 - k. Park only in designated parking areas (refer to map for approximate locations).
 - l. State Parks are carry-in, carry-out areas. Please take any trash you accumulate with you.
3. Deer Hunting – Archery/Crossbow Seasons
 - a. Archery/crossbow hunting **ONLY** is permitted for deer, in season, Monday through Thursday, December 2, 2024 through January 31, 2025
 - b. Hunting only allowed from the wooden PD Stand or a portable non-damaging tree stand (provided by the hunter), not less than 10 feet above ground level, within the perimeter marked with paint on trees around a central numbered pin. The PD Stand is for use **ONLY** by hunters possessing a Permanently Disabled Hunter card issued by the Delaware Division of Fish and Wildlife.
 - c. The PD stand and Pin sites will be filled on a first-come, first-served basis using the self-registration tag board system. The tag board is located in the parking lot at the end of Bay Road.
 - d. Bicycles, including E-bikes are not permitted on the trail at Thompson Island.
 - e. It is illegal to use or build a nailed or permanent tree stand or ladder. Portable stands must be of a type that will not damage trees. Unattended stands will be confiscated.
 - f. Hunter orange shall be worn in accordance with Delaware Division of Fish and Wildlife regulations during gun seasons.
4. All deer harvested in the Fresh Pond Unit of Delaware Seashore State Park must be reported via the on-line or toll-

free telephone reporting system as required by the Delaware Division of Fish and Wildlife. Deer should be reported as follows:

Land Type:	Public
County:	Sussex
Zone:	15
Location Type:	State or County Park
Location Description:	Delaware Seashore State Park

5. Hunting for waterfowl, rabbit, quail and dove is not permitted.

MESSAGE TO ALL HUNTERS:

- Please be careful, discrete and considerate around other park visitors. Understand that many park patrons are NOT hunters and some may feel threatened by your presence.
- By hunting in this park, you are a vital part of our “deer management team”. White-tail deer have been shown to ecologically damage their habitat when they reach 20 deer per square mile. In the majority of our parks, the deer herds have much greater densities than this.
- Your harvest information is very important to us. Please submit your data accurately. Have a safe and successful hunt.

Thompson Island2024-25, Updated 5/2/2024



Thompson Island Nature Preserve Hunting Map - 2024-25

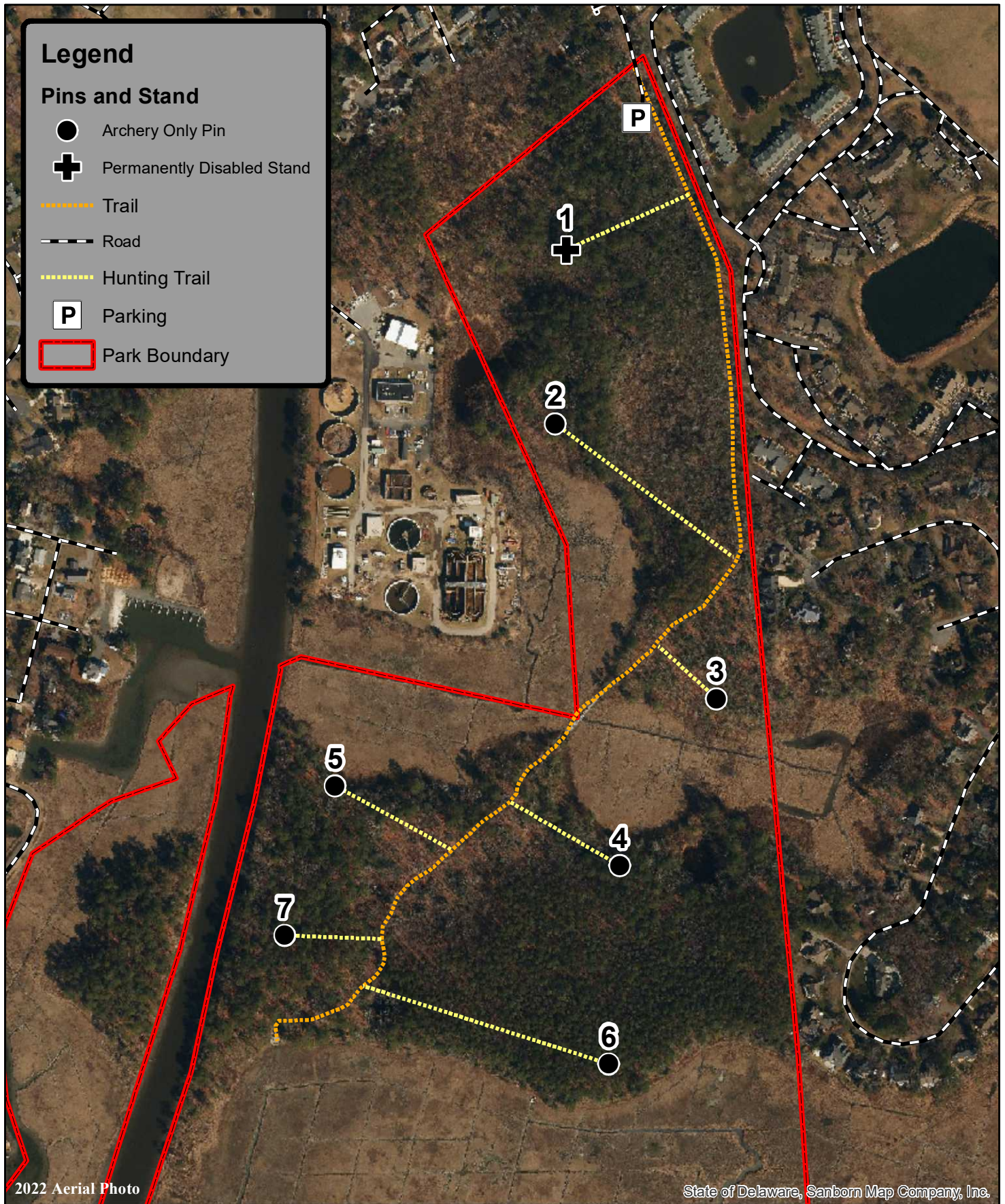


[link to park rules](#)

Legend

Pins and Stand

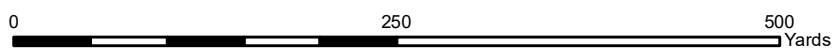
- Archery Only Pin
- ⊕ Permanently Disabled Stand
- ⋯ Trail
- Road
- ⋯ Hunting Trail
- P Parking
- ▭ Park Boundary



2022 Aerial Photo

State of Delaware, Sanborn Map Company, Inc.

Updated March 25, 2024
Environmental Stewardship Program
Division of Parks and Recreation



Holts Landing State Park

2024–25 Hunting Seasons/Hunting Rules

Refer to map for approximate locations of indicated areas.

1. In addition to the rules and regulations found in the “Delaware Hunting and Trapping Guide: 2024-2025”, specific rules that apply to Holts Landing State Park are listed below. **Registration of all hunters participating in the Delaware State Park Hunting Program is required. The permit may be purchased via Digital DNREC or where Delaware hunting licenses are sold beginning in August 2024. Outside vendors charge an additional processing fee. You must have this permit prior to hunting. NOTE:** Once obtained, this registration will be valid for hunters participating in the Delaware State Park Hunting Program at any of the nine Delaware State Parks where hunting is permitted.

It is the hunter’s responsibility to become familiar with each park’s specific rules and regulations prior to hunting.

2. General State Park Hunting Rules
 - a. There is **No Sunday Hunting** in Delaware State Parks
 - b. Failure to comply with any state laws, rules, regulations, and/or policies may result in arrest and/or suspension of all hunting privileges in Delaware State Parks.
 - c. **Handguns are not permitted for deer hunting in Delaware State Parks.**
 - d. It is illegal to use or build a nailed or permanent tree stand or ladder. Portable stands must be of a type that will not damage trees. **Unattended stands will be confiscated.**
 - e. Use of trail cameras in Delaware State Parks is prohibited.
 - f. Driving deer into and/or through hunting areas is prohibited.
 - g. The clearing/cutting of vegetation to form shooting lanes or for any other purpose is prohibited.
 - h. Use of Bait is prohibited in Delaware State Parks.
 - i. Use of buckshot is prohibited in Delaware State Parks.
 - j. Driving motorized vehicles off-road into fields, woods, or along trails is prohibited. No motorized hand carts or ATVs are allowed to recover harvested deer. E-bikes may be used on state park trails that allow bicycles. Bicycles, including E-bikes may not be ridden on paths from state park trails to the deer stand, pin or archery zone. Manual deer carts are authorized for use.
 - k. Park only in the designated parking areas (refer to map for approximate locations).
 - l. State Parks are carry-in, carry-out areas. Please take any trash you accumulate with you.
3. Deer Hunting – Archery/Crossbow Seasons
 - a. Archery/crossbow hunting **ONLY** is permitted for deer, in season and in designated areas from Monday, October 11, 2022 through Saturday, February 1, 2025.
 - b. Hunters shall hunt from one of three (3) accessible deer stands or the designated archery zone. Each stand and the archery zone shall be occupied by only one hunter. Mentored hunting is allowed, but only one member shall carry a bow/crossbow and actively hunt at a time.
 - c. The three (3) stands and the archery zone shall be filled on a first-come, first-served basis using the self-registration tag board. The tag board is located on the back of the trailhead kiosk near the designated hunter parking.
4. All deer harvested at Holts Landing State Park must be reported via the on-line or toll-free telephone reporting system as required by the Delaware Division of Fish and Wildlife. Deer should be reported as follows:

Land Type:	Public
County:	Sussex
Zone:	17
Location Type:	State or County Park
Location Description:	Holts Landing State Park

5. Hunting for waterfowl, rabbit, quail and dove is not permitted.

MESSAGE TO ALL HUNTERS:

- Please be careful, discrete and considerate around other park visitors. Understand that many park patrons are NOT hunters and some may feel threatened by your presence.
- By hunting in this park, you are a vital part of our “deer management team”. White-tail deer have been shown to ecologically damage their habitat when they reach 20 deer per square mile. In the majority of our parks, the deer herds have much greater densities than this.
- Your harvest information is very important to us. Please submit your data accurately. Have a safe and successful hunt.

Holts Landing 2024-25, Updated 5/2/2024



Holts Landing State Park Hunting Map 2024-25



[link to park rules](#)



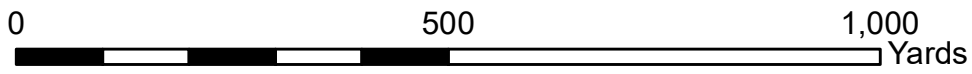
Legend

- Archery Only Stand
- Archery Zone
- Road
- Trail
- Stand Trail
- Parking
- Park Boundary

2022 Aerial Photo

State of Delaware, Sanborn Map Company, Inc.

Updated March 25, 2024
Environmental Stewardship Program
Division of Parks and Recreation



Trap Pond State Park

2024–25 Hunting Seasons/Hunting Rules

Refer to map on other side for approximate locations of indicated areas.

1. In addition to the Rules and regulations found in the “Delaware Hunting and Trapping Guide: 2024-2025” specific rules that apply to Trap Pond State Park are listed below. **Registration of all hunters participating in the Delaware State Park Hunting Program is required. The permit may be purchased via Digital DNREC or where Delaware hunting licenses are sold beginning in August 2024. Outside vendors charge an additional processing fee. You must have this permit prior to hunting. NOTE:** Once obtained, this registration will be valid for hunters participating in the Delaware State Park Hunting Program at any of the nine Delaware State Parks where hunting is permitted.

It is the hunter’s responsibility to become familiar with each park’s specific rules and regulations prior to hunting.

2. General State Park Hunting Rules
 - a. There is **No Sunday Hunting** in Delaware State Parks
 - b. Failure to comply with any state laws, rules, regulations, and/or policies may result in arrest and/or suspension of all hunting privileges in Delaware State Parks.
 - c. Handguns are not permitted for deer hunting in Delaware State Parks.
 - d. It is illegal to use or build a nailed or permanent tree stand or ladder. Portable stands must be of a type that will not damage trees. **Unattended stands will be confiscated.**
 - e. Use of trail cameras in Delaware State Parks is prohibited.
 - f. Driving deer into and/or through hunting areas is prohibited.
 - g. The clearing/cutting of vegetation to form shooting lanes or for any other purpose is prohibited.
 - h. Use of Bait/salt blocks is prohibited in Delaware State Parks.
 - i. Use of buckshot is prohibited in Delaware State Parks.
 - j. Hunting within 50 yards of any trail is prohibited.
 - k. Driving motorized vehicles off-road into fields, woods, or along trails is prohibited. No motorized hand carts or ATVs are allowed to recover harvested deer. E-bikes may be used on state park trails that allow bicycles. Bicycles, including E-bikes may not be ridden on paths from state park trails to the deer stand, pin or archery zone. Manual deer carts are authorized for use.
 - l. Park only in designated parking areas (refer to map for approximate locations).
 - m. State Parks are carry-in, carry-out areas. Please take any trash you accumulate with you.
3. Small Game Hunting
 - a. Use of archery equipment, .22 caliber rifles and shotguns is permitted for hunting Gray Squirrel and Cottontail Rabbit in-season, in Zone C, E and Zone I from October 12, 2024 through January 31, 2025 except during ANY deer firearm season.
4. Deer Hunting – Archery/Crossbow Seasons
 - a. Permitted in any area labeled as Zone AZ from September 2, 2024 through February 2, 2025.
 - b. Also permitted in Zones B, C, D, E, I, J, L and T; from September 2, 2024 through February 2, 2025.
 - c. Archery hunting is only permitted from provided wooded stands in Zones C and D during firearm seasons.
 - d. Hunters must wear hunter orange when archery hunting during any deer firearm season in all zones including Zones designated AZ.
5. Deer Hunting – Muzzleloader Seasons
 - a. Permitted in Zones C, D, E, F, G, I, J, L and T, October 11 - 19, 2024; January 27 – February 2, 2025.
 - b. Hunting in Zones C and D is only permitted from the provided wooden stands only during gun seasons. A tag board is located near the Bethesda Church restrooms on Wooten Road. Tags for stands are available on a first-come/first-served basis. Tags may not be pulled before 4:30 am. Place the tag on the dashboard of your vehicle while hunting. Tags must be returned to the board if you vacate the stand for any reason. Please enter the

required information on the sign-in/sign-out sheet located in the box on the tag board. Information provided on this form helps us better analyze our state park hunting program.

- c. Muzzleloaders may also be used during General Firearm Seasons (see below).
- d. Red fox and coyote may be harvested incidentally with a muzzleloader during muzzleloader seasons. Predator calls are not permitted.

6. Deer Hunting – General Firearm Seasons

- a. Permitted in Zones B, C, D, E, I, J, L and T, October 25 and 26, 2024, November 15 -23, 2024, December 14 -21, 2024 Special Antlerless and January 18 - 25, 2025.
- b. Hunting in Zones C and D is only permitted from the provided wooden stands only during gun seasons. Tags for stands are available on a first-come/first-served basis. Tags may not be pulled before 4:30 am. Place the tag on the dashboard of your vehicle while hunting. Tags must be returned to the board if you vacate the stand for any reason. Please enter the required information on the sign-in/sign-out sheet located in the box on the tag board. Information provided on this form helps us better analyze our state park hunting program.
- c. There is no gun hunting in Trap Pond State Park prior to the October muzzleloader season.
- d. Shotguns, muzzleloaders and straight-walled pistol-caliber rifles are permitted for use during the general firearm seasons.
- e. Red fox and coyote may be harvested as incidental take with a shotgun or muzzleloader during general firearm seasons. Use of calls is prohibited.

7. Thirteen deer stands are located in Zones C and D (refer to map for locations) to increase hunter safety and convenience. Use of these stands is on a first come/first serve basis and is mandatory during gun seasons. Stand #2 located on the south side of Wooten Road in Area D and #13 on the north side of Pepperbox Road in Area C are accessible stands designed for hunters with mobility issues. Tags for stands are available on a first-come/first-served basis. Tags may not be pulled before 4:30 am. Place the tag on the dashboard of your vehicle while hunting. Tags must be returned to the board if you vacate the stand for any reason. Please enter the required information on the sign-in/sign-out sheet located in the box on the tag board. Information provided on this form helps us better analyze our state park hunting program.

8. Access - Hunters may not cross private property without permission from the land owner.

- a. Parking for Area A is located on Wooten Road. **Parking within the main park to hunt is prohibited.**
- b. Access to Zone E is directly from Arvey Road.
- c. Hunters must access Zone J directly from adjacent public roads only.
- d. Access to Zone J on the east side of Hitch Pond Road is only from the forest that is owned by Delaware State Parks. **Do not cross the privately owned fields adjacent to park property for any reason.**

9. All deer harvested in Trap Pond State Park must be reported via the on-line or toll-free telephone reporting system as required by the Delaware Division of Fish and Wildlife. Deer should be reported as follows:

Land Type:	Public
County:	Sussex
Zone:	16 (AZ 1-9, AZM and AZT1-3, B, C, D, E, J, & T) 14 (I, L & AZL)
Location Type:	State or County Park
Location Description:	Trap Pond State Park

10. Dependent upon ongoing construction, weather, or other factors, one or more areas may be closed. For updated or additional information, contact the park office at (302) 875-5153 or visit the Delaware State Parks website at www.destateparks.com.

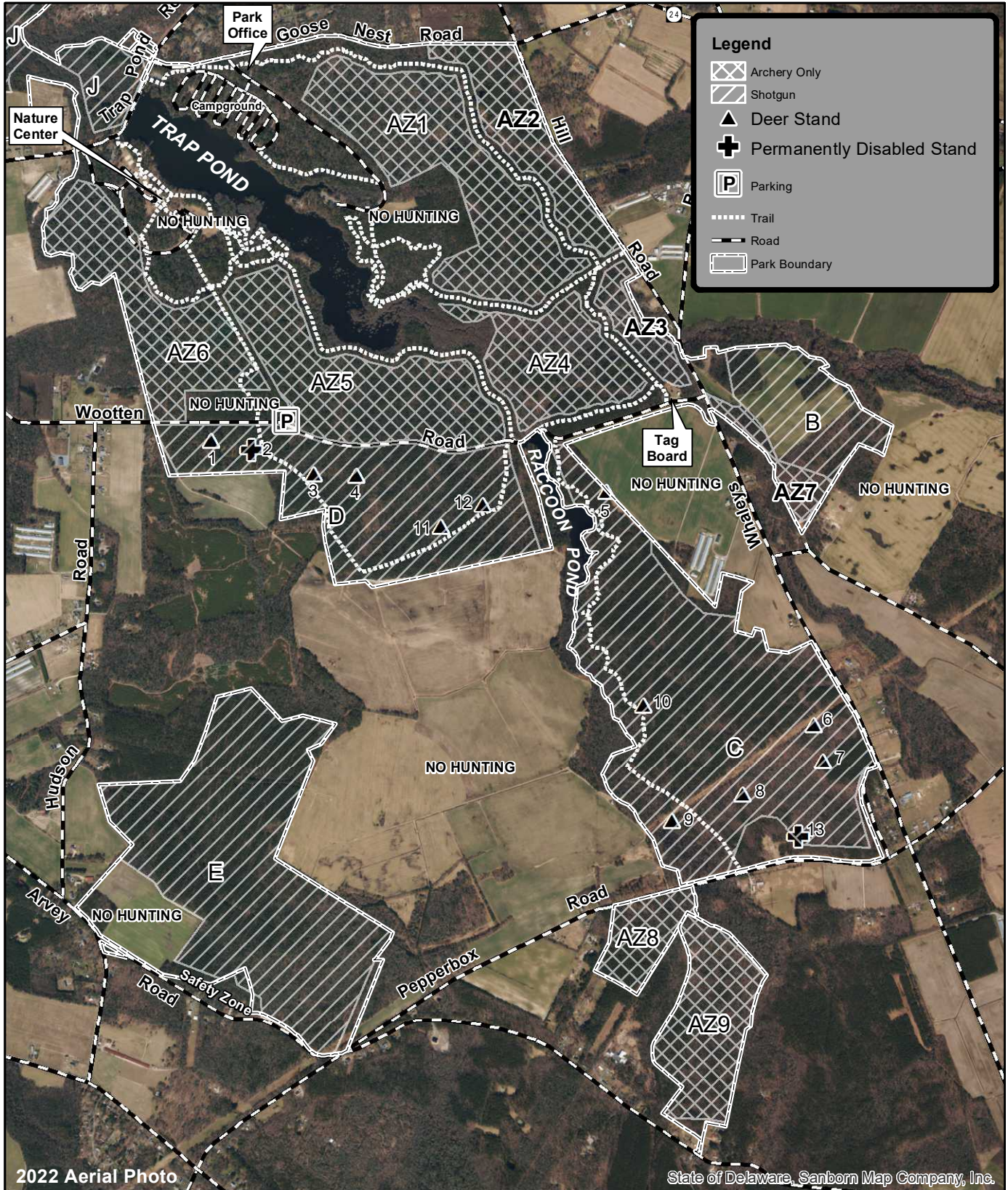
11. Please be careful, discrete and considerate around other park visitors. Understand that many park patrons are NOT hunters and some may feel threatened by your presence. Have a safe and successful hunt.



Trap Pond State Park Hunting Map 2024-25 (Zones A-E)



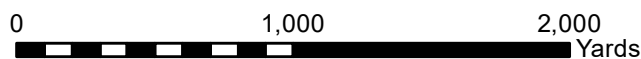
[link to park rules](#)



2022 Aerial Photo

State of Delaware, Sanborn Map Company, Inc.

Updated May 9, 2024
Environmental Stewardship Program
Division of Parks and Recreation





Trap Pond State Park - Hunting Map 2024-25 (Zones I & J)



[link to park rules](#)

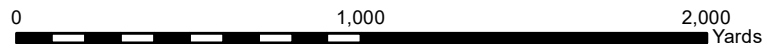


Legend

- Road
- ▨ Archery Only
- ▧ Shotgun
- ▭ Park Boundary

2022 Aerial Photo

State of Delaware, Sanborn Map Company, Inc.

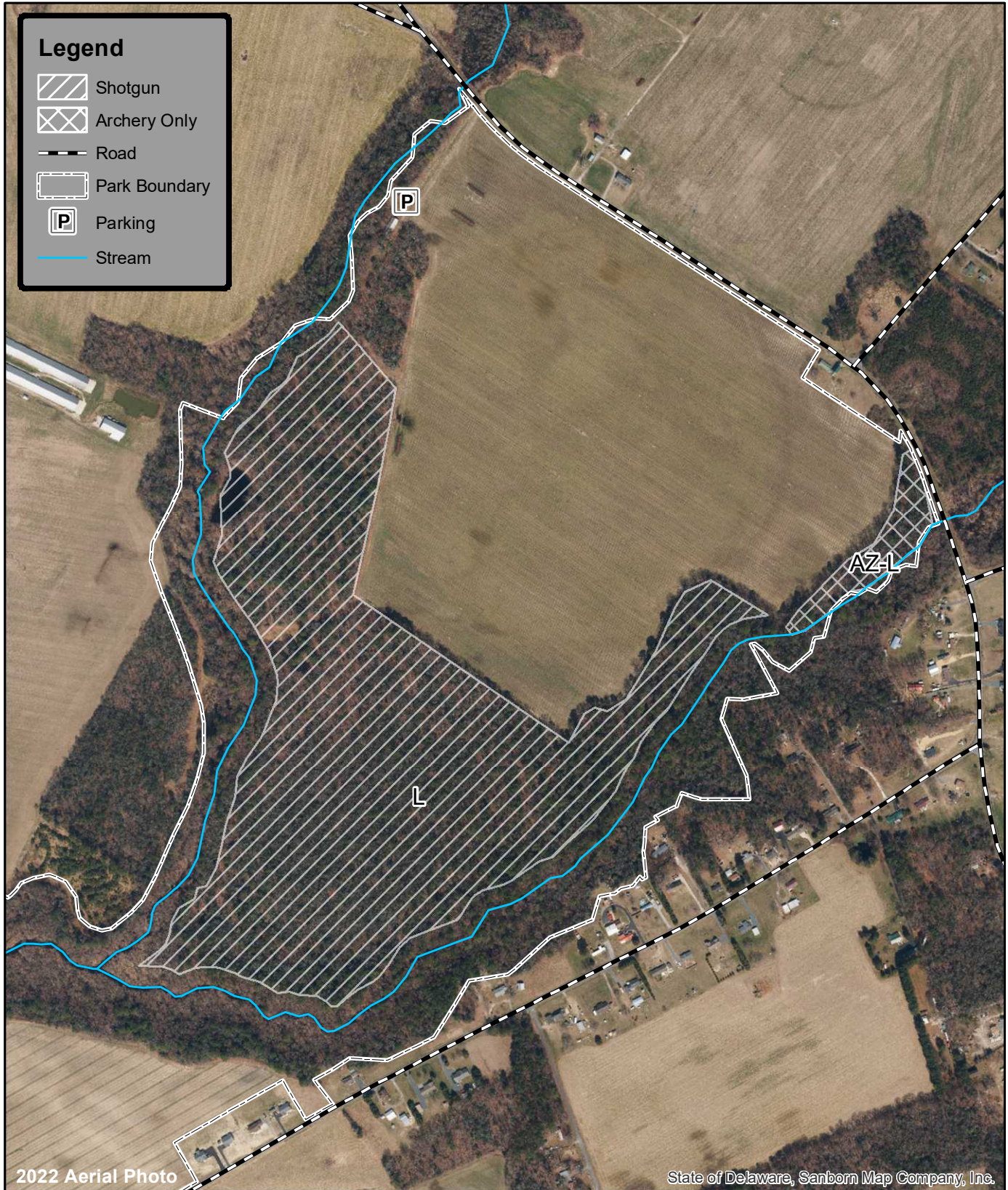




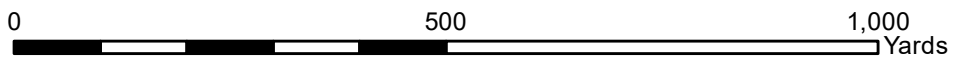
Trap Pond State Park Hunting Map 2024-25 (Zone L)



[link to park rules](#)



Updated March 6, 2024
Environmental Stewardship Program
Division of Parks and Recreation

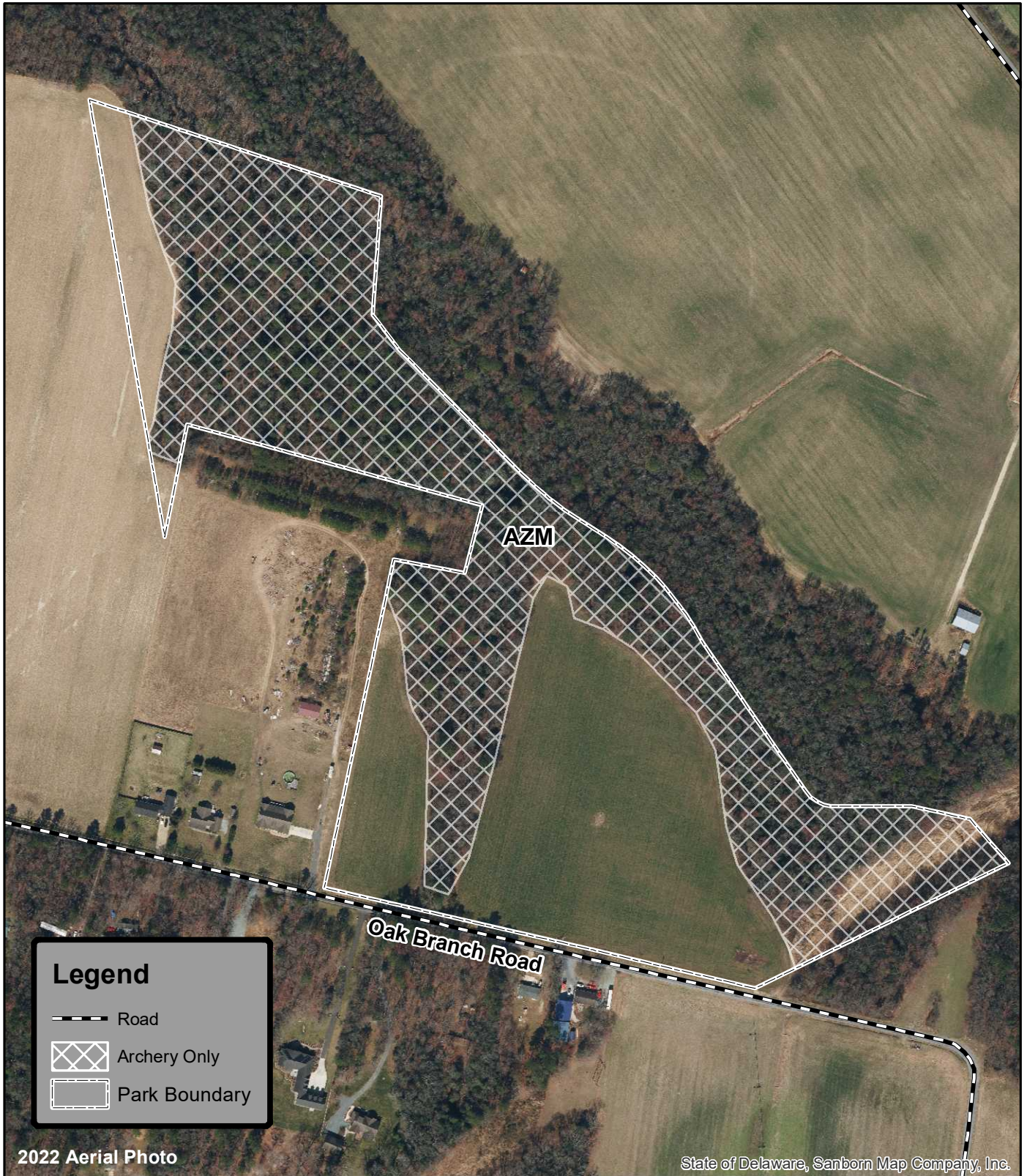




Trap Pond State Park Morris Branch Tract Hunting Map 2024-25



[link to park rules](#)



Updated May 9, 2024
Environmental Stewardship Program
Division of Parks & Recreation

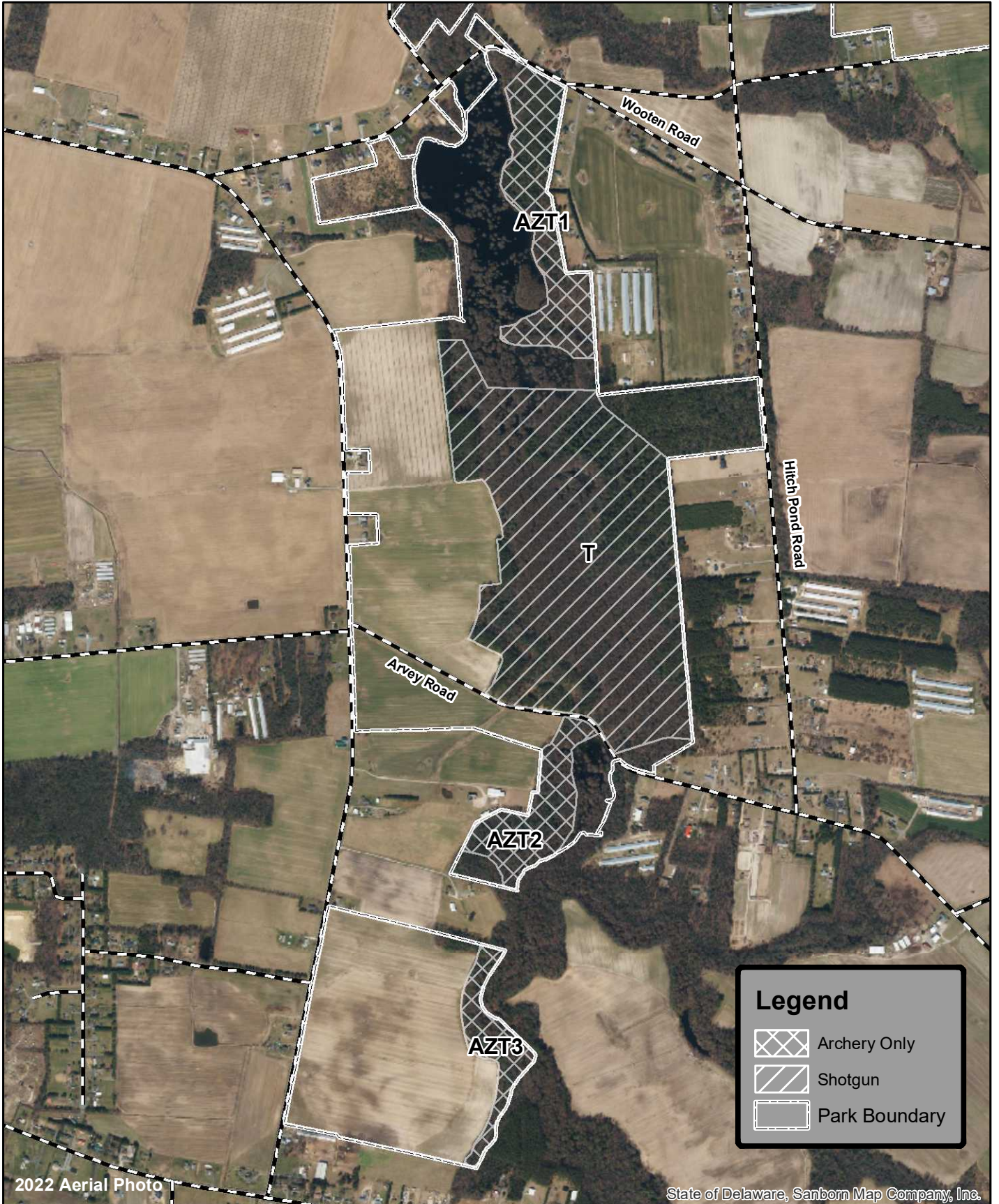




Trap Pond State Park Trussum Pond Hunting Map 2024-25



[link to park rules](#)



2022 Aerial Photo

State of Delaware, Sanborn Map Company, Inc.

Updated May 9, 2024
Environmental Stewardship Program
Division of Parks and Recreation

