

# Delaware Seashore State Park

## 2024–25 Hunting Seasons/Hunting Rules

*Refer to map for approximate locations of indicated areas*

1. In addition to the rules and regulations found in the “Delaware Hunting and Trapping Guide: 2024-2025”, specific rules that apply to the Delaware Seashore State Park are listed below. **Registration of all hunters participating in the Delaware State Park Hunting Program is required. The permit may be purchased via Digital DNREC or where Delaware hunting licenses are sold beginning in August 2024. Outside vendors charge an additional processing fee. You must have this permit prior to hunting. NOTE:** Once obtained, this registration will be valid for hunters participating in the Delaware State Park Hunting Program at any of the nine Delaware State Parks where hunting is permitted.

**It is the hunter’s responsibility to become familiar with each park’s specific rules and regulations prior to hunting.**

2. General Park Hunting Rules
  - a. There is **No Sunday Hunting** in Delaware State Parks
  - b. Failure to comply with any state laws, rules, regulations, and/or policies may result in arrest and/or suspension of all hunting privileges in Delaware State Parks.
  - c. **Handguns are not permitted for deer hunting in Delaware State Parks.**
  - d. It is illegal to use or build a nailed or permanent tree stand or ladder. Portable stands must be of a type that will not damage trees. **Unattended stands will be confiscated.**
  - e. Use of trail cameras in Delaware State Parks is prohibited.
  - f. Driving deer into and/or through hunting areas is prohibited.
  - g. The clearing/cutting of vegetation to form shooting lanes or for any other purpose is prohibited.
  - h. Use of Bait is prohibited in Delaware State Parks.
  - i. Use of buckshot is prohibited in Delaware State Parks.
  - j. Driving motorized vehicles off-road into fields, woods, or along trails is prohibited. No motorized hand carts or ATVs are allowed to recover harvested deer. E-bikes may be used on state park trails that allow bicycles. Bicycles, including E-bikes may not be ridden on paths from state park trails to the deer stand, pin or archery zone. Manual deer carts are authorized for use.
  - k. Park only in designated parking areas (refer to map for approximate locations).
  - l. State Parks are carry-in, carry-out areas. Please take any trash you accumulate with you.
3. Waterfowl Hunting
  - a. Waterfowl hunting, in season, is permitted from November 1, 2024 through January 31, 2025.
  - b. Hunters must hunt from one of 16 designated and numbered blind sites only. No exceptions. Blind sites are located on Rehoboth and Indian River Bays and are designated by brown and white signs. Boat blinds may be used, but must be within 10 yards of the designated blind site sign. Hunting in open water boat blinds must be a minimum of 1500 feet from designated blind sites in accordance with Delaware Division of Fish and Wildlife regulations.
  - c. Use of blind sites will be on a first-come, first-served basis. Hunters may build GRASS BLINDS for these sites after August 10, 2024. **The Division of Parks and Recreation is not liable for blinds built on park property.** Vegetation may not be cut from State Park property. *Phragmites* and Chinese Silver Grass (*Miscanthus*) can NOT be used for blind construction.
  - d. **NOTE:** Waterfowl seasons as determined by the Delaware Division of Fish & Wildlife and approved by the United States Fish & Wildlife Service. Dates are available in the “Delaware Hunting and Trapping Guide: 2024-2025”.

4. Deer Hunting – Archery/Crossbow Season
  - a. Permitted on Burtons Island Only September 2, 2024 to February 1, 2025.
  - b. Archers must hunt from an elevated portable, non-damaging tree stand when firearm hunting is occurring on Burtons Island. Archers are required to wear hunter orange during all firearm seasons.
5. Deer Hunting – Muzzleloader Season
  - a. Permitted on Burtons Island Only January 27 - February 1, 2025.
  - b. Hunters must hunt from an elevated portable stand, provided by the hunter, at least 10 feet above the ground. Hunting from the ground during guns seasons is no longer permitted.
  - c. Red fox and coyote may be harvested as incidental take with a muzzleloader while hunting for deer during the January muzzleloader season. Use of calls is prohibited.
6. Deer Hunting – General Firearm Season
  - a. Permitted on Burtons Island Only, Youth/Non-ambulatory Disable Deer Hunt November 2, 2024, November 15 – November 23, 2024, December 14 – December 21, 2024 Special Antlerless and January 18 – January 25, 2025 seasons.
  - b. Shotguns, muzzleloaders and straight-walled pistol-caliber rifles are permitted for hunting in state parks south of the Chesapeake and Delaware Canal where gun hunting is permitted.
  - c. Hunters must hunt from an elevated portable stand, provided by the hunter, at least 10 feet above the ground. Hunting from the ground during guns seasons is no longer permitted.
  - d. Red fox and coyote may be harvested as incidental take with a shotgun or muzzleloader while hunting for deer during general firearm seasons. Use of calls is prohibited.
7. Deer harvest data is an important tool for state natural resource managers. Accurate data is essential to help us manage the deer herd in Delaware State Parks and the State Parks hunting program. All deer harvested on Burtons Island in Delaware Seashore State Park must be reported via the on-line or toll-free telephone reporting system as required by the Delaware Division of Fish and Wildlife. Deer should be reported as follows:

Land Type:	Public
County:	Sussex
Zone:	15
Location Type:	State or County Park
Location Description:	Delaware Seashore State Park

**MESSAGE TO ALL HUNTERS:**

- Please be careful, discrete and considerate around other park visitors. Understand that many park patrons are NOT hunters and some may feel threatened by your presence. Have a safe and successful hunt.

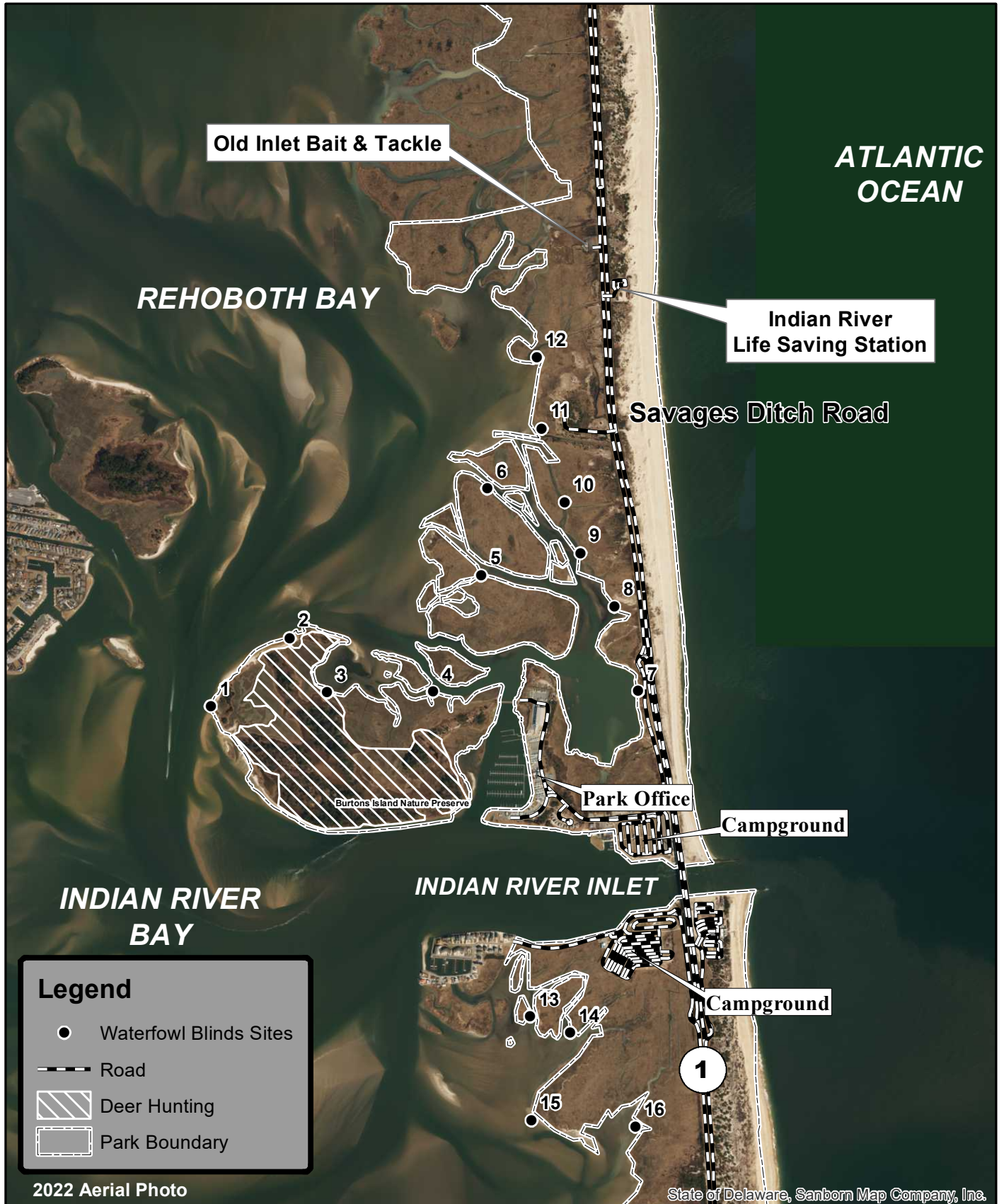
*DelawareSeashore2024-25 Updated 6/12/2024*



# Delaware Seashore State Park Hunting Map 2024-25



[link to park rules](#)



**Legend**

- Waterfowl Blinds Sites
- - - Road
- ▨ Deer Hunting
- - - - Park Boundary

2022 Aerial Photo

State of Delaware, Sanborn Map Company, Inc.

Updated March 25, 2024  
Environmental Stewardship Program  
Division of Parks and Recreation



# Delaware Seashore State Park - Fresh Pond Tract 2024 – 2025 Hunting Seasons/Hunting Rules

*Refer to map for approximate locations of indicated areas.*

1. In addition to the rules and regulations found in the “Delaware Hunting and Trapping Guide: 2024-2025”, specific rules that apply to the Fresh Pond Tract are listed below. **Registration of all hunters participating in the Delaware State Park Hunting Program is required. The permit may be purchased via Digital DNREC or where Delaware hunting licenses are sold beginning in August 2024. Outside vendors charge an additional processing fee. You must have this permit prior to hunting. NOTE:** Once obtained, this registration will be valid for hunters participating in the Delaware State Park Hunting Program at any of the nine Delaware State Parks where hunting is permitted.

**It is the hunter’s responsibility to become familiar with each park’s specific rules and regulations prior to hunting.**

2. General Park Hunting Rules
  - a. There is **No Sunday Hunting** in Delaware State Parks
  - b. Failure to comply with any state laws, rules, regulations, and/or policies may result in arrest and/or suspension of all hunting privileges in Delaware State Parks.
  - c. **Handguns are not permitted for deer hunting in Delaware State Parks.**
  - d. It is illegal to use or build a nailed or permanent tree stand or ladder. Portable stands must be of a type that will not damage trees. **Unattended stands will be confiscated.**
  - e. Use of trail cameras in Delaware State Parks is prohibited.
  - f. Driving deer into and/or through hunting areas is prohibited.
  - g. The clearing/cutting of vegetation to form shooting lanes or for any other purpose is prohibited.
  - h. Use of Bait is prohibited in Delaware State Parks.
  - i. Use of buckshot is prohibited in Delaware State Parks.
  - j. Driving motorized vehicles off-road into fields, woods, or along trails is prohibited. No motorized hand carts or ATVs are allowed to recover harvested deer. E-bikes may be used on state park trails that allow bicycles. Bicycles, including E-bikes may not be ridden on paths from state park trails to the deer stand, pin or archery zone. Manual deer carts are authorized for use.
  - k. Park only in designated parking areas (refer to map for approximate locations).
  - l. State Parks are carry-in, carry-out areas. Please take any trash you accumulate with you.
3. Deer Hunting – Archery/Crossbow Season
  - a. September 2, 2024 –February 1, 2025.
  - b. **Note the areas marked Zone A & C on the map are Archery/Crossbow Only areas.** Self-registration is by Zone and is on a first-come, first-served basis.
  - c. In Hunting Zone B, self-registration for stands #1 -10 is on a first-come, first-served basis. Stand #1 is for use **ONLY** by hunters possessing a Permanently Disabled Hunter card issued by the Delaware Division of Fish and Wildlife.
  - d. Hunters must sign in and sign out on the registration board at the parking lot off Hickman Road.
  - e. These stands are for your convenience and are not mandatory. Archery hunters may hunt from a portable stand or from the ground throughout the zone so long as it is not within 50 yards of a trail or road.
  - f. **There is no archery/crossbow hunting in Zone B during gun seasons.**
  - g. **Note the 50 yard Safety Zones along the trails throughout the park as well as near occupied dwellings.**
4. Deer Hunting – Muzzleloader and General Firearm Seasons

- a. **Due to increased park use by the public, the first gun season will begin with the November Shotgun Season. As a result, the October Antlerless Shotgun dates and the October Muzzleloader Seasons are closed.**
  - b. Open during permitted seasons from designated stands #1-10 only, November 15 – November 23, 2024, December 14 – December 21, 2024 (Special Antlerless), January 18 – January 25, 2025 and January 27 –February 1, 2025 (Muzzleloader).
  - c. Self-registration is on a first-come, first-served basis. Hunters must sign in and sign out on the registration board re-located to the Hickman Road entrance. Sign-in sheets and tags will be distributed at 5:00 am during shotgun season. Stand #1 is for use ONLY by hunters possessing a Permanently Disabled Hunter card issued by the Delaware Division of Fish and Wildlife.
  - d. Hunting is prohibited within 50 yards of any park trail. The clearing/cutting of vegetation to form shooting lanes or for any other purpose is prohibited.
  - e. Shotguns, muzzleloaders and straight-walled pistol-caliber rifles are permitted for use during the general firearm deer seasons.
  - f. Red fox and coyote may be harvested as incidental take with a muzzleloader while hunting for deer during the January muzzleloader season, and with a shotgun or muzzleloader during general firearm seasons. Use of calls is prohibited.
5. All deer harvested in the Fresh Pond Unit of Delaware Seashore State Park must be reported via the on-line or toll-free telephone reporting system as required by the Delaware Division of Fish and Wildlife. Deer should be reported as follows:

Land Type:	Public
County:	Sussex
Zone:	17
Location Type:	State or County Park
Location Description:	Delaware Seashore State Park

#### **MESSAGE TO ALL HUNTERS:**

- Please be careful, discrete and considerate around other park visitors. Understand that many park patrons are NOT hunters and some may feel threatened by your presence.
- Please show consideration to fellow hunters.
- Have a safe and successful hunt.

*DSSPFreshPond2024-25 Updated 6/5 12/2024*



# Delaware Seashore State Park Fresh Pond Hunting Map 2024-25



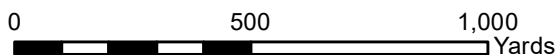
link to park rules



2022 Aerial Photo

State of Delaware, Sanborn Map Company, Inc.

Updated March 11, 2024  
Environmental Stewardship Program  
Division of Parks and Recreation



# Delaware Seashore State Park – Thompson Island 2024–25 Hunting Seasons/Hunting Rules

*Refer to map for approximate locations of indicated areas.*

1. In addition to the rules and regulations found in the “Delaware Hunting and Trapping Guide: 2024-2025”, specific rules that apply to the Thompson Island Nature Preserve are listed below. **Registration of all hunters participating in the Delaware State Park Hunting Program is required. The permit may be purchased via Digital DNREC or where Delaware hunting licenses are sold beginning in August 2024. Outside vendors charge an additional processing fee. You must have this permit prior to hunting. NOTE:** Once obtained, this registration will be valid for hunters participating in the Delaware State Park Hunting Program at any of the nine Delaware State Parks where hunting is permitted.

**It is the hunter’s responsibility to become familiar with each park’s specific rules and regulations prior to hunting.**

2. General State Park Hunting Rules
  - a. There is **No Sunday Hunting** in Delaware State Parks
  - b. Failure to comply with any state laws, rules, regulations, and/or policies may result in arrest and/or suspension of all hunting privileges in Delaware State Parks.
  - c. **Handguns are not permitted for deer hunting in Delaware State Parks.**
  - d. It is illegal to use or build a nailed or permanent tree stand or ladder. Portable stands must be of a type that will not damage trees. **Unattended stands will be confiscated.**
  - e. Use of trail cameras in Delaware State Parks is prohibited.
  - f. Driving deer into and/or through hunting areas is prohibited.
  - g. The clearing/cutting of vegetation to form shooting lanes or for any other purpose is prohibited.
  - h. Use of Bait is prohibited in Delaware State Parks.
  - i. Use of buckshot is prohibited in Delaware State Parks.
  - j. Driving motorized vehicles off-road into fields, woods, or along trails is prohibited. No motorized hand carts or ATVs are allowed to recover harvested deer. Manual deer carts are authorized for use.
  - k. Park only in designated parking areas (refer to map for approximate locations).
  - l. State Parks are carry-in, carry-out areas. Please take any trash you accumulate with you.
3. Deer Hunting – Archery/Crossbow Seasons
  - a. Archery/crossbow hunting **ONLY** is permitted for deer, in season, Monday through Thursday, December 2, 2024 through January 31, 2025
  - b. Hunting only allowed from the wooden PD Stand or a portable non-damaging tree stand (provided by the hunter), not less than 10 feet above ground level, within the perimeter marked with paint on trees around a central numbered pin. The PD Stand is for use **ONLY** by hunters possessing a Permanently Disabled Hunter card issued by the Delaware Division of Fish and Wildlife.
  - c. The PD stand and Pin sites will be filled on a first-come, first-served basis using the self-registration tag board system. The tag board is located in the parking lot at the end of Bay Road.
  - d. Bicycles, including E-bikes are not permitted on the trail at Thompson Island.
  - e. It is illegal to use or build a nailed or permanent tree stand or ladder. Portable stands must be of a type that will not damage trees. Unattended stands will be confiscated.
  - f. Hunter orange shall be worn in accordance with Delaware Division of Fish and Wildlife regulations during gun seasons.
4. All deer harvested in the Fresh Pond Unit of Delaware Seashore State Park must be reported via the on-line or toll-

free telephone reporting system as required by the Delaware Division of Fish and Wildlife. Deer should be reported as follows:

Land Type:	Public
County:	Sussex
Zone:	15
Location Type:	State or County Park
Location Description:	Delaware Seashore State Park

5. Hunting for waterfowl, rabbit, quail and dove is not permitted.

**MESSAGE TO ALL HUNTERS:**

- Please be careful, discrete and considerate around other park visitors. Understand that many park patrons are NOT hunters and some may feel threatened by your presence.
- By hunting in this park, you are a vital part of our “deer management team”. White-tail deer have been shown to ecologically damage their habitat when they reach 20 deer per square mile. In the majority of our parks, the deer herds have much greater densities than this.
- Your harvest information is very important to us. Please submit your data accurately. Have a safe and successful hunt.

*Thompson Island2024-25, Updated 5/2/2024*





# Thompson Island Nature Preserve Hunting Map - 2024-25

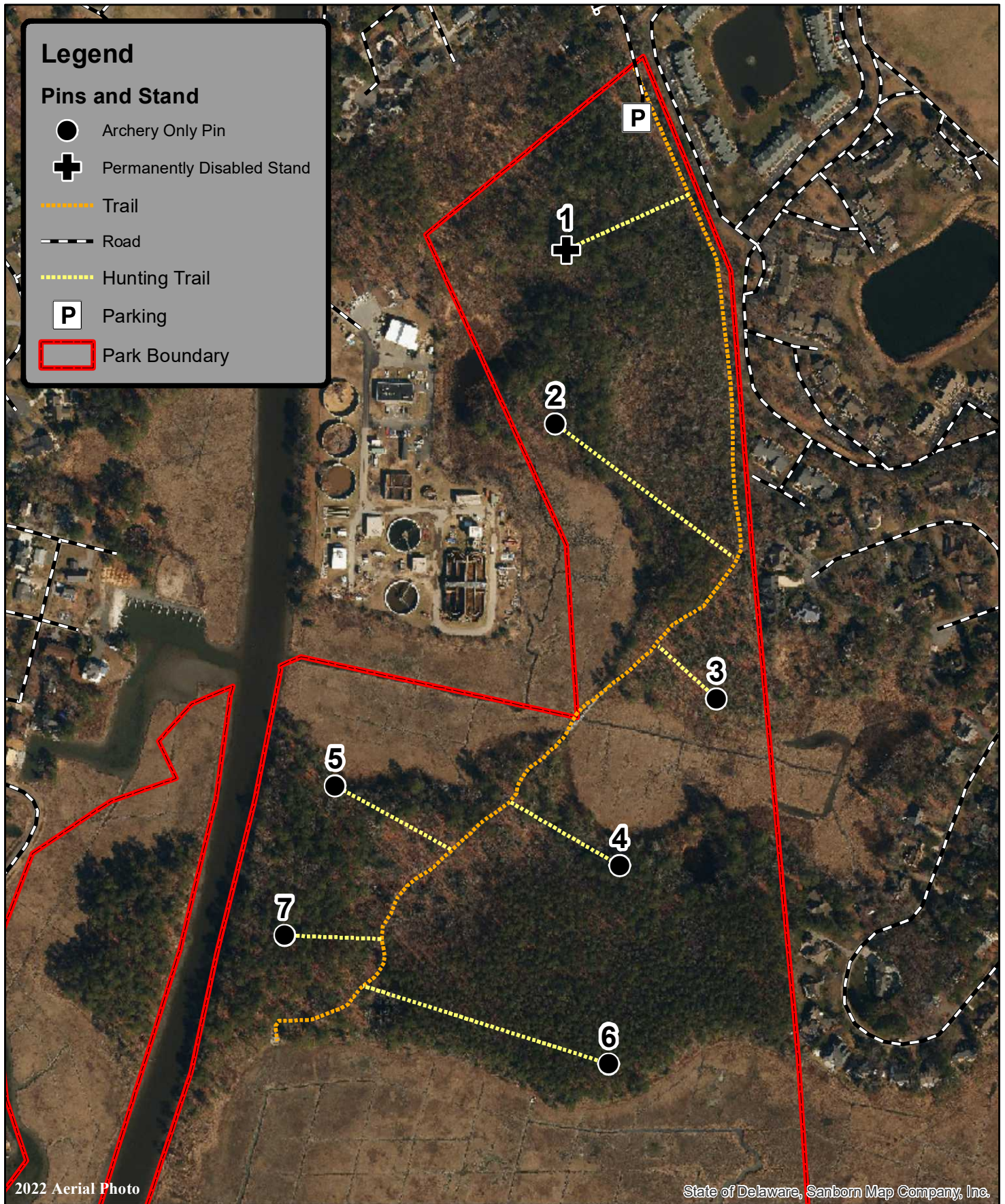


[link to park rules](#)

**Legend**

**Pins and Stand**

- Archery Only Pin
- ⊕ Permanently Disabled Stand
- ⋯ Trail
- Road
- ⋯ Hunting Trail
- P Parking
- ▭ Park Boundary



2022 Aerial Photo

State of Delaware, Sanborn Map Company, Inc.

Updated March 25, 2024  
Environmental Stewardship Program  
Division of Parks and Recreation

