

# FIRST STATE HERITAGE PARK

ANNUAL REPORT  
Fiscal Year 2022



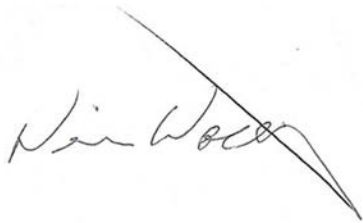
 First State  
**Heritage Park**  
HISTORIC SITES

# SUPERINTENDENT'S MESSAGE

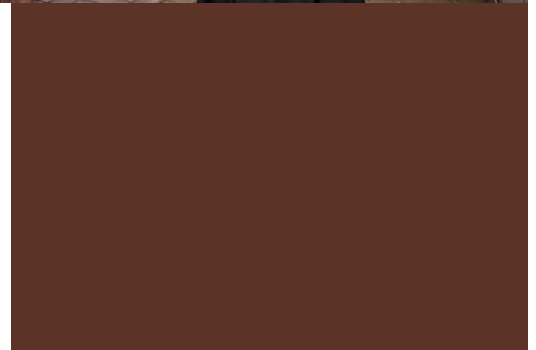
---

As First State Heritage Park (FSHP) and the world started to move out of the worst of the pandemic, FSHP transitioned its programming out of COVID-19 protocols and returned to a new normal. Visitation increased, more schools started reaching out for field trips and we were able to start an extensive outreach program. New opportunities for programming and partnerships came to light and FSHP is working to maintain the track we are on to make ourselves more known to the community, county and beyond.

We are also ecstatic to be a part of a parks and recreation division that has been named the best in the country ... twice. In 2021, the American Academy for Park and Recreation Administration and National Recreation and Park Association chose the DNREC Division of Parks and Recreation for the National Gold Medal Award for Excellence in Park and Recreation Management state park system, an award the division also won in 2015. This is due to our tremendously talented and knowledgeable staff. Without their dedication to the park, we would not be able to achieve a fraction of the rigorous programming calendar we successfully present each year. We can only hope that moving forward, we can put COVID-19 behind us and bring even more visitors to our park to spread the word about the rich history of historic Dover.



**NICOLE WORTHLEY**  
Park Superintendent





# PARK HISTORY

First State Heritage Park became Delaware’s first “urban park without boundaries” in 2005 when Gov. Ruth Ann Minner signed Executive Order No. 55 into law, which created the First State Heritage Park Task Force comprised of leaders from the community and various historical organizations who came together to lay the foundations of the park that exists today. First State Heritage Park combines the talents and history of several Dover sites including Delaware Public Archives, Biggs Museum of American Art, Old State House Museum, Johnson Victrola Museum and the John Bell House Interpretive Center. Division staff provide various thematic walking tours of The Dover Green, Legislative Hall, Christ Church cemetery, Methodist cemetery, Presbyterian cemetery and Woodburn-The Governor’s Mansion.



## MISSION OF FIRST STATE HERITAGE PARK

- To interpret historical and cultural resources of Delaware’s Capital City of Dover.
- To foster among both Delawareans and visitors a deeper understanding of Dover’s historical significance and contributions of the city and its residents to the history of Delaware and of the nation.
- To encourage stewardship of Dover’s historic buildings and natural areas and documentation of its rich history.
- To raise the visibility of Delaware’s capital as an attraction for heritage tourists by creating and marketing a more comprehensive and cohesive picture of the cultural assets of Dover and its historic significance to the State of Delaware.

# VISITATION

---

First State Heritage Park is unique within the Delaware State Park system in that it encompasses several museums and sites within the Dover area. Not only does it present programming from the John Bell House, FSHP works closely with its partners from the Old State House, Johnson Victrola Museum, Biggs Museum of American Art, Delaware Public Archives, Legislative Hall and Woodburn-The Governor's Mansion. As the park came out of the COVID-19 pandemic, visitors made it clear they had been waiting for programming to return. Visitation picked up throughout the year as restrictions were lifted and visitors felt safe to return to travelling.

Program attendance: 3,273

Walking Tours: 851

John Bell House General Attendance: 978

Group Tours: 174

School Tour Programming: 806

Legislative Hall: 1,557

Woodburn and Hall House: 464

Outreach: 2,948

**Total for DSP managed sites: 11,051**

Biggs Museum of American Art: 12,977

Delaware Public Archives and Welcome Center: 6,402

Johnson Victrola Museum: 2,588

Old State House Museum: 3,538

**Total for Partner Managed Sites: 25,505**

**Total for all FSHP sites: 36,556**





# SOCIAL MEDIA

---

The Facebook page for First State Heritage Park continued to see an increase in both followers and engagement across the board with a **reach of 88,480**. To aid in this continued engagement, the staff created two new series that proved to be extremely popular: “Where are we Wednesday” and “Then and Now.” One series included close-up photos showing a detail of buildings in the city for Facebook followers to guess the location of the staff member. A follow up post revealed the location and gave its short history. The other combined a historical photo superimposed on the modern location.





# JOHN BELL HOUSE

---

This 18th-century building serves as First State Heritage Park's Interpretive Center and the heart of the park. The small 18th-century building is where staff present programming and welcome visitors to learn the history of Dover as well as begin their walking tours of The Green. Since more sites throughout the country opened their doors again, First State Heritage Park sent its staff to learn from the best via trips to search for research, supplies and talent, and take part in professional classes to expand their knowledge and repertoire. Staff also worked behind the scenes to continue expanding the park's programming slate to include new walking tours, outreach programs and interactive programming.

## Leadership:

**Park superintendent:**  
Nicole Worthley

**Interpretive Programs  
Manager:**  
Ryan Schwartz

**Lead Interpreter:**  
Rachel Sheffield





# DELAWARE PUBLIC ARCHIVES AND WELCOME CENTER

---

As the repository for records of Delaware state and local governments, the Delaware Public Archives contains thousands of documents and other materials that can help with researching one's genealogical roots. Among those records are census materials, tax assessments, probate/estate records, land deeds, military records and vital statistics including birth, death and marriage records.

The Welcome Center serves as the starting point for a visitor's experience to FSHP. A visitor can obtain information and brochures, learn about Dover's offerings and take a moment to walk through the center's exhibit space.

## **Leadership:**

**Director:** Stephan Marz

**Media Relations:**

Corey Marshall-Steele

**Information Resource**

**Specialist:**

Dawn Mitchell

**Information Resource**

**Manager:**

Edward McWilliams

**Welcome Center Supervisor:**

David Littleton



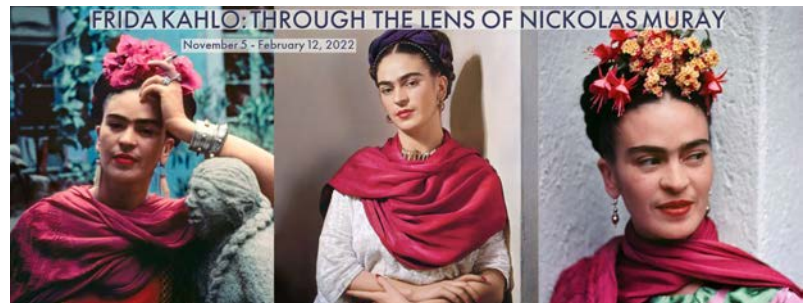
# BIGGS MUSEUM OF AMERICAN ART

The Biggs Museum of American Art (Biggs) works tirelessly every year to provide a wide range of rotating exhibits and programming for the public. FY22, the Biggs was able to host several exhibitions including “Guild Hall: An Adventure in the Arts: Selections from the Permanent Collection of the Guild Hall Museum,” “Frida Kahlo: Through the Lens of Nikolas Muray,” “Unmasking Culture: An Examination of the Ritual Masks of Mexico,” “Visions & Voices: A Juried Exhibition of Mid-Atlantic African American Artists,” “Winslow Homer: From Poetry to Fiction-The Engraved Works” and “Inventing Illustration: Illuminating Vintage Children’s Literature & Other Stories.” Included in new initiatives was a series of new summer camps allowing visitors ages 6 to 12 to learn about different art styles and techniques. A lecture series by the Biggs Museum curator highlighted artists, collections and specialists such as Stephan Althouse and Salomon Grimberg. In honor of their Frida Kahlo exhibit, the museum hosted a wildly successful Dia de los Muertos community event, which has led to an expanded series of Spanish language programming.

## Leadership:

**Executive Director:**  
Charles A. Guerin

**Curator of Community and Academic Programs:**  
Kristen Matulewicz





# OLD STATE HOUSE MUSEUM

The Old State House (OSH) hosted several in-person and virtual programs throughout the year, including topics focused on the American Revolution, Colonial Delaware laws, the fight to desegregate schools in Delaware, the life of Delaware's Commodore Thomas Macdonough and a Market Fair performance that featured the lives of Drs. James Tilton and James Sykes. OSH also continued its successful Friends of Folk concert and its coffeehouse series that highlights the history of the War of 1812. Park staff worked with the Historical and Cultural Affairs Curator of Education Vertie Lee to expand the site's African American history and presented their findings to the Delaware State Education Association. Joining in on Dover Comic Con, OSH hosted several panels about the history of American comic books, improv in a virtual setting and how to create comic books.



## Leadership:

**Director:** Timothy Slavin

**Deputy Director:**  
Suzanne Savery

**Sites Manager:**  
Dan Citron

**Site Supervisor:**  
Nena Todd

**Lead Interpreter:**  
Gavin Malone

A poster for the 'Coffee House Series' titled 'The War of 1812: Over Two Centuries Later'. The poster features a painting of a large sailing ship on the water. The text on the poster includes the title, the series name, the dates and times of the events, and the topics for each event. The HCA logo is also present.

**COFFEE HOUSE SERIES**

**THE WAR OF 1812: OVER TWO CENTURIES LATER**

**THURSDAYS IN APRIL AT THE OLD STATE HOUSE, 5 PM**

<b>April 7th</b> AFRICAN AMERICANS PLAY A VITAL ROLE IN THE WAR OF 1812	<b>April 14th</b> REMINISCENCES OF THE LIFE AND TIMES OF DR. JAMES TILTON
<b>April 21th</b> THE FEDERALIST VIEWS OF JAMES A. BAYARD	<b>April 28th</b> STORIES OF THE DAUNTLESS WOMEN OF THE WAR OF 1812

**HCA**  
HISTORICAL & CULTURAL

FOR MORE INFORMATION CONTACT THE OLD STATE HOUSE  
(302) 744-5054 OR OSHMUSEUM@DELAWARE.GOV



# JOHNSON VICTROLA MUSEUM

---

The Johnson Victrola Museum (JVM) spent the year creating and presenting a new series of programming to broaden the themes of the museum outside of what has been typically offered. Programs include a stop motion animated video titled “Love, Betrayal and Banjo Strings: True Crime Through Song,” in person “A Very Victor Holiday” offered decoration painting, refreshments, holiday music and a Victor Salesroom Santa Claus, and a virtual video series, “The Women who Shaped Country Music” highlighting the different women who helped define country music from the 1940’s through the 1980s. Their biggest project and milestone were spending more than half a year creating a feature length documentary titled “My Dear Douglass,” based on extensive research by site staff, as well as dramatized historical reenactments that told the story of the Victor Talking Machine Company’s forgotten founder Leon F. Douglass.

## Leadership:

**Director:** Timothy Slavin

**Deputy Director:**  
Suzanne Savery

**Site supervisor:**  
Christopher Hall

**Lead interpreter:**  
Nicole Rogers (until  
February 2022)





# FIRST STATE CLUB

---

The First State Club is First State Heritage Park's youth volunteer group based out of Milford High School. Run by Amanda Cinque, the club serves to represent FSHP at outreach events like Milford's Third Thursday, participate in parades and volunteer at FSHP events. They also work throughout the year to create their own programming to present to the public via online presentations, videos and in-person activities. The skills learned by the students help them in their day-to-day lives will help them as they enter the work force after graduating. they also presented Games on The Green during the summer once a week in addition to their normal programming, Due to the high level of volunteer work the First State Club completes every year, members of the club qualified for the Presidential Volunteer Medal **with a total of 814 hours.**



# FIRST STATE NATIONAL HISTORICAL PARK

---

The Green in Dover serves as both the heart of the historic Dover area, but also the heart of much of First State Heritage Park's programming. The division is lucky to work closely with the National Park Service through First State National Historical Park (First State NHP) to utilize The Green and collaborate on programming and events throughout the year. The most notable event: Saving the Past, Shaping the Future (SPSF)-formally ArCH days, returned after a COVID-19 hiatus. The event was hosted on both the Dover Green and New Castle Green as a field trip day for fourth-grade students from across the state. This event brought 370 students to various tables hosted by FSHP and other programming partners focused on the history of Delaware.





# DOWNTOWN DOVER PARTNERSHIP AND FIRST SATURDAYS

The Downtown Dover Partnership (DDP) previously presented “First Friday” down Lookerman Street to bring the community together and highlight the merchants in the downtown area. Unfortunately, this event did not survive the COVID-19 pandemic. To retain the idea of bringing the community together, FSHP Superintendent Nicole Worthley suggested the event date move to coincide with First State Heritage Park’s “First Saturday in the First State” programming. DDP quickly agreed with the idea and while it is early in this partnership to see or measure success, the collaboration has brought in the resources and partnership of the DDP, Dover Public Library and several businesses throughout town; it is also assisting FSHP in marketing and promotion of the already existing events and bringing awareness to programming and events that happen throughout town.

**JUNE 4, 2022**  
DOWNTOWN DOVER, DE

*The Capital of the First State*  
**FIRST Saturdays**  
Dover

**Delaware Pride Festival**  
411 Legislative Ave | 9 AM - 5 PM | Celebrate the 25th Annual Delaware Pride Festival, the single largest LGBTQ+ gathering in Delaware! Featuring a parade, live entertainment, drag queens, over 100+ vendors, a kid zone, a beer garden, resource booths, **and more!**

**Johnson Victrola Museum**  
375 S New St | 9:30 AM - 4 PM | Discover the origin of recorded music. Exhibits showcase the life and legacy of Eldridge Reeves Johnson, a pioneer in early sound recording.

**Biggs Museum of American Art**  
406 Federal St | 10 AM - 4 PM | Free admission and an opening exhibition, *Award Winners XXII* -showcasing outstanding quality of work in choreography, folk art, jazz, literature, media arts, music, and visual arts. Also enjoy a hands on Biggs Craft Workshop (for kids and adults), Family Art Interpretation Guide, and virtual scavenger hunt!

**Old State House**  
25 The Green | 10 AM - 4:30 PM | Receive your National Park Passport Stamp at the site of the State Capitol from 1792 - 1933. Currently exhibiting "The Old State House: A True Restoration 1976 - 2016." Tours begin at 10 AM, 11 AM, 1 PM, 2 PM, and 3 PM

**A Victorian Picnic on the Green**  
43 The Green | 11 AM - 3 PM | Experience Dover's oldest park the way it was first enjoyed at the 2nd Annual Victorian Picnic on the Green. Bring a blanket and enjoy the shady trees, nine-piece brass band, Victorian lawn games, crafts, costumed interpreters, **and more!** Costumes encouraged! Paid lunch available with RSVP

DELAWARE PRIDE VICTORIAN PICNIC

**Events are free and open to the public.**  
**For more information, visit [tinyurl.com/DoverFirst](https://tinyurl.com/DoverFirst)**



# BUDGET AND REVENUE

As per previous years, First State Heritage Park's \$250,000 budget is allocated to the DNREC Division of Parks and Recreation from the Department of State. This covers salaries for park staff, programming supplies, marketing, contractual supplies and more. The superintendent's position is still paid through the division's budget, while the interpretive program manager's position continues as a New Castle Conservation District (NCCD) position. All casual seasonal staff received state-mandated raises as part of the state's decision to gradually bring the minimum wage up to \$15 per hour.



Through programming and donations, **FSHP** brought in \$2,431 in revenue

**Interpretive Program Manager:**

\$57,485.85

**Seasonal Salaries:** \$105,000

**Capitol Police PO:** \$5,000

**Marketing:** \$13,000

**Interpretation/Programming:**

\$33,558

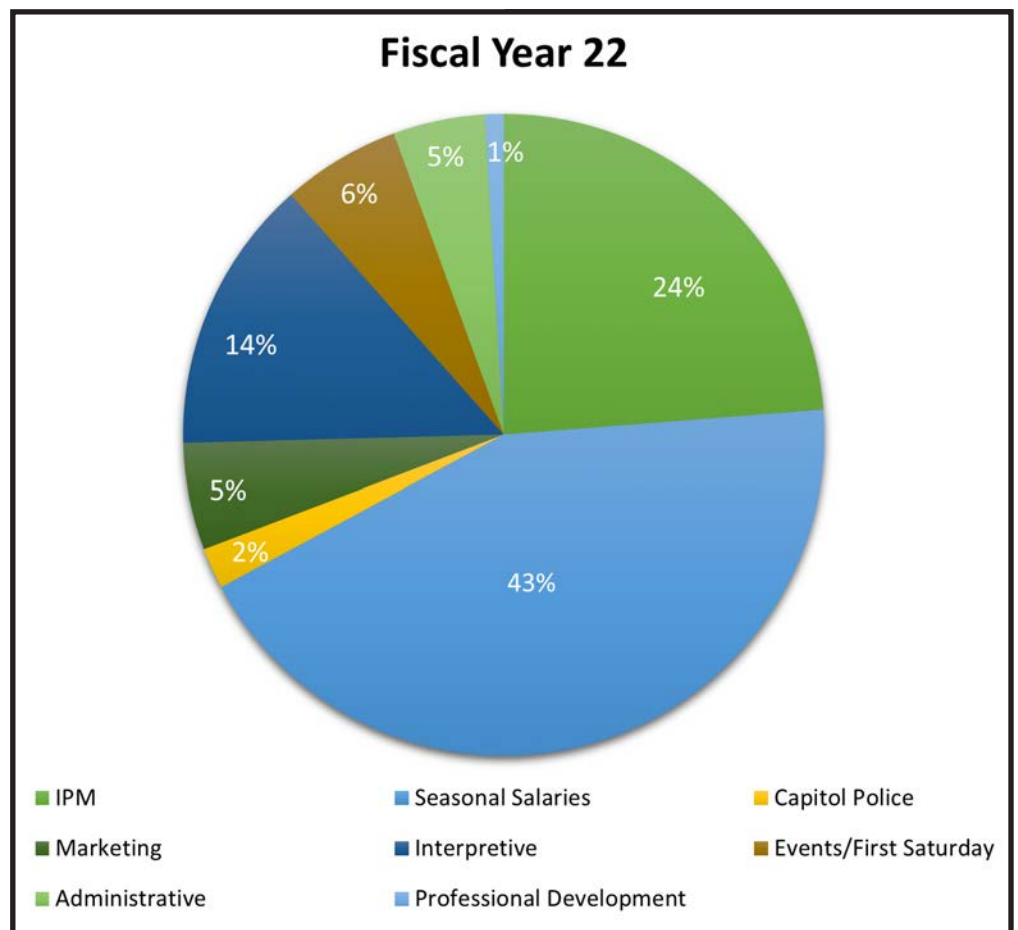
**Events and First Saturday:**

\$14,439

**Administrative:** \$11,200

**Research and Professional**

**Development:** \$2,300





# PROGRAMMING HIGHLIGHTS

---

## First Saturdays Return!

To help bring an air of normalcy to the park after the COVID-19 shutdowns in 2020 and 2021, FSHP worked to restart the First Saturdays in the First State program series. Working with FSHP partners, the park offered free programming based around various themes throughout the year. FSHP also wanted to give the partners more voice in the themes since the missions of each site vary greatly. The partners agreed on more open-ended themes such as nature for April, women's history in March and fall or Halloween in October. This takes the pressure off creating new, specific programming each month. It also allows each site to work within its own mission while still presenting programming reflective of the theme to create a cohesive First Saturday programming event. Throughout the year, **2,616 people** came to the park to enjoy the First Saturday festivities!

## Lantern Tours

Lantern tours continue to be one of First State Heritage Park's most popular programs. In 2022, the park returned to the Old Methodist, Presbyterian and Christ Church cemeteries, and the Dover Green, for both general tours and the premium Dark Dover series. In Fiscal Year 22, **96 tickets were sold for \$1,060 in total revenue.**

*"Thoroughly enjoyed the cemetery program at the Presbyterian Church in Dover yesterday, 5/28/22. Such meaningful information presented. Many thanks! Looking forward to the next event."*

*-Anonymous*



# PROGRAMMING HIGHLIGHTS

---

## Make a Splash

Make A Splash was once again held in person at the John Dickinson Plantation in Dover after a brief hiatus. FSHP Interpretive Programs Manager Ryan Schwartz attended the event and presented his 18th-century sailor impression to **151 students**. Ryan taught students about the connections between the Delaware River and everyday life as well as how sailors lived in those times. Students were also able to get their own temporary nautical tattoo.

## Historic Trades

Because FSHP staff cannot be experts in all aspects of history, the park has worked to bring in more presenters for talks in the John Bell House. This includes discussions on Yeoman F, sailor life and revolutionary medicine. Part of this effort has expanded into a “Colonial Trades” program series in which FSHP has highlighted experts in the fields of basketry, carpentry, fiber works and colonial stay making. This endeavor was supported by **87 visitors**, who learned about a wide variety of trades. Throughout the year, we also brought in interpreters and program managers from several of the other State Parks including Fort Delaware and Killens state parks, and equipment was brought onto The Green from the Indian River Life Saving Station.





# PROGRAMMING HIGHLIGHTS

---

## Makers Workshops

Rachel Sheffield, lead interpreter and seamstress, brought back her Winter Workshop series in which customers could purchase a package of supplies ranging from \$5 to \$30 and attend a sewing class lead by Rachel. Projects included colonial mitts, heart-shaped pin cushions and colonial winter cloaks. The small classes proved to be an excellent way for Rachel to work one-on-one with visitors.

## Pop Up Opera and Shakespeare in the Park

First State Heritage Park expanded its programming through partnerships with the Opera Delaware and Brown Box Theatre to bring the stage to visitors in Dover. As part of its Pop-Up Opera program, Opera Delaware presented a series of single pieces in the cemetery of Christ Church. This was the first time the opera was performed in Dover, and the talent and backdrop drew **47 visitors to the event**, with a majority who requested the program return in the future. Brown Box Theatre's troop performed Shakespeare's "Much Ado About Nothing," and was well received by **52 visitors on The Green**.



*"I just wanted to let you know how much I enjoyed the Opera Delaware performance at Christ Church last night. What a wonderful event in a beautiful setting – it was a brilliant collaboration! You found a great way to present something fun, creative and inspiring. Not only were the voices stunning, but the talented way they assumed the character of the part they were singing showed off their acting abilities too. Such gifted performers."*

*-Kristy Huxhold, Administrator of Woodburn*



# INTERPRETER INITIATIVES

---

One of First State Heritage Park's many new initiatives in 2022 included diversifying programming and interpretation. Interpreter Alex Rumm took the lead to create a new walking tour and a special program related to the history of African Americans in Dover and Delaware. His walking tour, "Hidden Lives: Slavery, Freedom and The Green," explored the lives of several African Americans in Dover who were not written about in most history books. FSHP piloted the program and allowed for feedback from visitors. The walking tour was a success – Between sold out reservations for the tour and the endless positive feedback. After taking some comments from visitors into consideration, the tour has been finalized and is now in the general rotation of walking tours for the park. Alex's separate program, "A State of Repression," focused on the Black Codes that were the legal framework for how African Americans could live and work in the state from the time of Pennsylvania colony to the Civil Rights Act. This program was also incredibly successful, and Alex is reworking it to be a school outreach program. Another initiative was the incorporation of LGBTQ+ history into the park. The annual Delaware Pride event was held on Legislative Mall during this year's Victorian Picnic. To mirror that event and not compete, Lead Interpreter Rachel created posters of past and present Delaware citizens who identify on the LGBTQ+ spectrum and rainbow cockades for staff to wear throughout the day. Visitors seemed quite pleased with this, and the park is working on ways to incorporate LGBTQ+ history into a program or work the histories into the walking tours.

## Outreach

Aside from increasing onsite programming and diversifying offerings, a major push for FY22 has been outreach. Ryan Schwartz created a new travelling trunk program based on the history of the Civilian Conservation Corps (CCC) of the 1930s, Rachel Sheffield presented several talks to organizations and the First State Club increased their outreach, as well. Due to this push for more outreach opportunities, the history and knowledge of FSHP was brought to **2,948 visitors**.

*"Thank you, for offering this program. It was well-researched, well-presented, and all questions were thoroughly answered. It was obvious that the tour leader knew his stuff"*

-Ruth Ashby

*"Alex, you did an excellent job on this very first Hidden Lives tour. We appreciate you doing this. Look forward to future events."*

-Anonymous

*"ALEX IS SUPERB!"*

-Anonymous





# INTERPRETER INITIATIVES

## Professional Development

As historic sites and museums opened back up to the public and staff were allowed to begin travelling, FSHP took the opportunity to bring staff to new locations, bring experts on site and have staff complete internships. Professionals brought to the Rose Cottage to teach staff on first-person and general interpretation techniques included interpreters from the Maryland Park Service, who presented their own CCC impression, Kristen Hammerstrom from Philadelphia in her female apothecary owner impression and Mike Follin, the Market Fair's Doc Balthazar. All three did a fantastic job giving several viewpoints and tricks of the trade to our staff. This will help FSHP staff grow and give a more well-rounded experience to the park's visitors. Off campus, FSHP was able to bring staff to several locations, including the Old Barracks Museum in New Jersey, Colonial Williamsburg in Virginia, Fort Frederick in Maryland and Pennsbury Manor in Pennsylvania. These living history sites allowed staff to see other interpreters in their natural element and special programs gave staff ideas for future programming at First State Heritage Park, including cooking. The most impressive opportunity was Rachel Sheffield's internship, for which she was selected from a competitive pool of applicants, to train from the milliners of Colonial Williamsburg. While there, she learned more about first- and third-person interpretation at a renowned historic site, and the tips and tricks of how to make 18th-century dresses and accessories. When she returned, Rachel used what she learned to free drape and hand make, from beginning to end, a proper 18th-century dress for FSHP Superintendent Nicole Worthley without using a pattern, as Rachel had done for previous dresses.

*"The interpreter working at the John Bell House was nothing short of fantastic. She went out of her way answering questions, providing a sense of history about the house, and describing the historical context of the surrounding areas. She also helped me get a Passport Stamp from the Old State House. I can't thank her enough for going above and beyond. She is a huge asset to the park.-*

*Anonomous referring to interpreter Laura Parks.*





# EVENTS

---

## Dover Comic Con

Dover Comic Con was presented by Delaware State News again in 2021; however, due to the COVID-19 pandemic and high temperatures, it was not as well attended as in previous years. The Comic Con was moved to June for 2022, placing two comic cons within the same fiscal year. For both years, First State Heritage Park brought in Lauren Munez, a professional freehand Silhouette artist, to create free silhouettes for guests with assistance from Delaware Division of the Arts grants. The second Comic Con in June was better attended as an event and for FSHP. Programming included the True Crime walking tour and Victorian Dover with the Caped Crusader tour. Comic Con continues to be a draw for Dover and provides staff with the opportunity to turn well-known comic and pop culture characters into historical mirror images. The second Comic Con for FY2022 had Victorian Batman inspired by the “Gotham by Gaslight” series, Edwardian Presidential Loki and a 1930s Slytherin Professor.

*“My family was one of many to get their silhouettes done. They loved it and had a great time.”*  
-Darren Lawson





# EVENTS

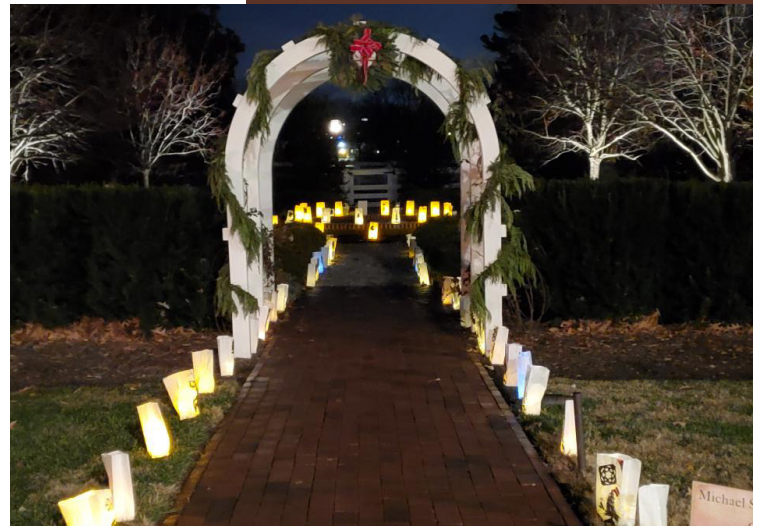
---

## Victorian Picnic

This was the second year presenting our Victorian Picnic on The Green. First State Heritage Park once again invited the Fort Delaware Cornet Band to perform and contracted La Baguette Bakery and Catering to prepare the box lunches sold to visitors. The event drew 223 visitors, with more dressed up than the previous year. The FSHP craft featured in the John Bell House was a hit with visitors able to decorate their own 1880s boater hat with a variety of decorations, including faux stuffed birds.

## Woodburn Illuminations

December 2021, FSHP debuted a new program in collaboration with the Biggs Museum of American Art, Dover Art League, House of Coffi, Lauren Conrad from the Delaware Department of Musical Education and Woodburn: Governor's Mansion. This evening program was designed to allow visitors to stroll the grounds of Woodburn, sip hot cocoa, listen to choirs from three Delaware schools, enjoy the more than 600 luminary bags created at each of Delaware's 17 state parks, and take part in several art classes from Delaware Schools. Despite some rain throughout the night, **343 visitors attended the event.**



# EVENTS

---

## 18TH-Century Market Fair

Market Fair made a triumphant return in November 2021 after a hiatus due to COVID-19. The fair was brought back on a smaller scale than previous years to allow for social distancing and space between the vendor tents. Despite the ongoing pandemic, **1,897 visitors** enjoyed the blustery day watching performers and purchasing handmade goods. New vendors and demonstrators were brought in to change up the event, which proved to be extremely popular. New vendors were thrilled with the event and look forward to coming for the next one. Market Fair continues to be the park's highest-attended event and a staple for the park.

## Girl Scouts Love State Parks

FSHP once again collaborated with the other state parks to present programming for September 2021's Girl Scouts Love State Parks event. Partnering with the Biggs Museum of American Art and the National Park Service, FSHP offered several options for Girl Scouts to complete required activities. These programs included counting and identifying the trees on The Green, learning the principles of "Leave No Trace," creating their own constellation art and learning about the Lenape People of Delaware, a debut program created by Nicole Worthley and the pilot experience of the program. After the success of **56 scouts** interacting with the Lenape Tribe of Delaware station, the experience has been worked into a school program for field trips and can be used as an outreach program to take to the other state parks.



*"Just wanted to say 'Thanks' for sending Alex to be our guide yesterday. He was wonderful. He was very knowledgeable and kind. He told great stories and answered all questions. You have a great staff! Thanks again."*

*-Beth Jelich, coordinator for OSHER Lifelong Learning*



# LOOKING TO THE FUTURE

---

Thanks to a surplus of money at the end of the fiscal year, funding was successfully encumbered for the bathroom/storage unit to be built behind the John Bell House. With this surplus, staff were also able to buy new lanterns to replace broken lanterns for tours and the beginnings of an assortment of colonial furniture. Once finished, the John Bell House will be transformed into the tavern it once stood as during the 18th century. The John Bell House will be utilized as a true first-person location in place of a modern interpretive center, and will fit in with the direction First State Heritage Park staff are leading interpretation in the park.

*"I was walking in Dover today and had the chance to speak with some students participating in a FSHP program. I asked them what they thought, and they raved about how much fun they were having, what they learned and how much cooler Dover is than they thought. Kudos to the FSHP team.*  
-Jon Wickert





First State Heritage Park  
102 South State Street  
Dover, DE 19901

[destateparks.com/History/FirstStateHeritage](https://destateparks.com/History/FirstStateHeritage)

Delaware Department of Natural Resources  
and Environmental Control  
Division of Parks and Recreation  
89 Kings Highway  
Dover, DE 19901  
[destateparks.com](https://destateparks.com)



**DELAWARE STATE  
PARKS**  
YOUR HISTORY ADVENTURE STARTS HERE