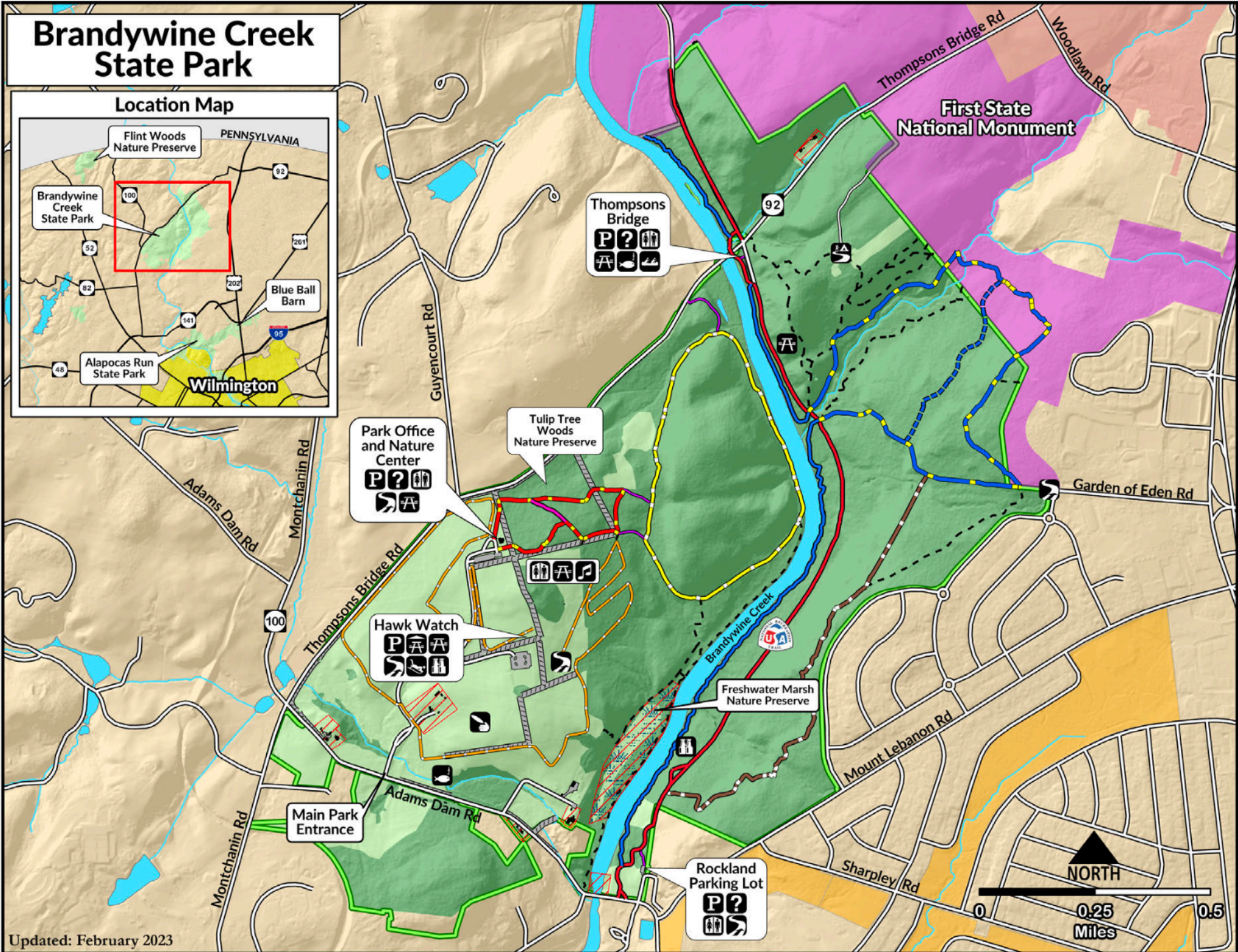
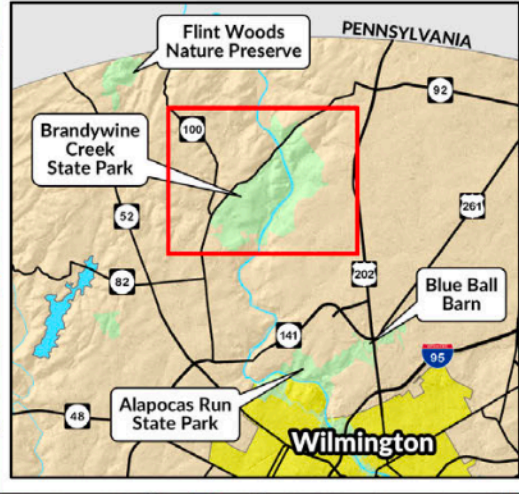


Brandywine Creek State Park

Location Map

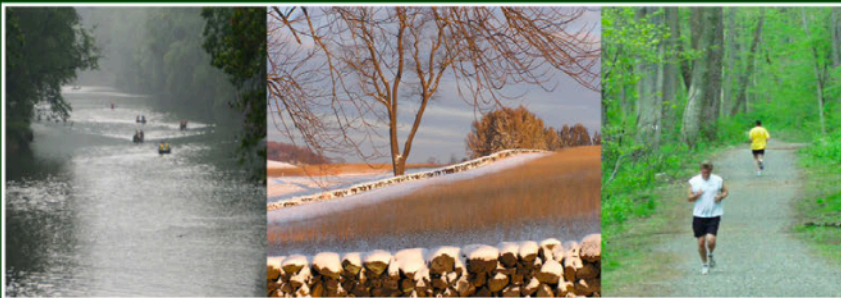


Brandywine Creek State Park

Legend

- | | |
|---|---|
|  Open Park Land |  Picnic Pavilion |
|  Wooded Park Land |  Picnic Tables |
|  First State National Monument |  Amphitheater |
|  Woodlawn Trustees |  Trail Head |
|  County Park |  Disc Golf |
|  Municipalities |  Canoe Access |
|  Building |  Fishing |
|  Parking |  Scenic Overlook |
|  Water Bodies |  Primitive Youth Camping |
|  Restricted Areas |  Sledding |
|  Freshwater Marsh |  Hiking |
|  Stone Wall |  Biking |
|  Parking |  Horseback Riding |
|  Information Board | |
|  Restrooms | |

Updated: February 2023



Contact Information

Park Office: (302) 577-3534 Nature Center: (302) 655-5740
 Pavilion Reservations: (877) 987-2757
www.destateparks.com



DELAWARE STATE PARKS
 YOUR OUTDOOR ADVENTURE STARTS HERE

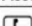
Trails and Permitted Uses

- | | | | | |
|---|---|---|---|---|
|  Creekside Trail (2.6 miles) |  |  Brandywine Trail (2.9 miles) |  |  |
|  Cross Country Course (3.1 miles) |  |  Rocky Run (1.8 miles) |  |  |
|  Hidden Pond (1.4 miles) |  |  Rocky Run Cut-Off (0.5 miles) |  |  |
|  Tulip Tree Trail (0.8 miles) |  |  Connector |  |  |
|  Interpretive Cut-Off |  |  Unmarked Trail | | |
|  Longwall Trail (1.1 miles) |  | | | |




Trail Descriptions

Tulip Tree

Trail Width	Surface Type	Trail Grade	Accessible
Avg 4 Feet Min 3 Feet	Packed Earth	Avg 7% Max 40%	 - No


Enter through the rock wall next to the Nature Center where you will begin your 0.8 mile hike in the Tulip Tree Woods Nature Preserve. Open fields will be visible to the south beyond the carefully crafted stone walls built by masons in the early 1900's. Trail users will experience rocky terrain and gorgeous views of Brandywine Creek and the elaborate stone walls within the park.

Rocky Run

Trail Width	Surface Type	Trail Grade	Accessible
Avg 3 Feet Min 2 Feet	Packed Earth	Avg 8% Max 30%	 - No


Rocky Run is one of three Trail Challenge loops within Brandywine Creek State Park. The Rocky Run loop is approximately 1.8 miles long and can be accessed from the Thompson's Bridge parking lot. It has a packed earth surface.

Hidden Pond

Trail Width	Surface Type	Trail Grade	Accessible
Avg 3 Feet Min 2 Feet	Packed Earth	Avg 7% Max 35%	 - No

Visitors can access the packed earth loop trail from the connector trail off Thompson's Bridge Road or from the Tulip Tree Trail that begins at the Nature Center. The grade is gradual throughout most of the hike with steep grade changes as the trail approaches and leaves the banks of Brandywine Creek.

Brandywine Trail

Trail Width	Surface Type	Trail Grade	Accessible
Avg 8 Feet Min 4 Feet	Crushed Stone	Avg 4.0% Max 20%	 - Yes

The Brandywine Trail runs along the east bank of Brandywine Creek. Trail users will enjoy a gradually undulating crushed stone trail with beautiful views of the Creek. The trail is accessed from the Thompsons Bridge Parking Area or the Rockland Falls Road Trailheads.